

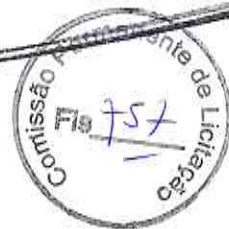
PREFEITURA MUNICIPAL DE SANTANA DO ACARAU-CE

SECRETARIA DE INFRAESTRUTURA SEINFRA

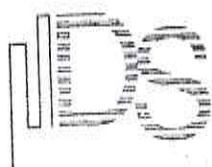
ESPECIFICAÇÕES TÉCNICAS

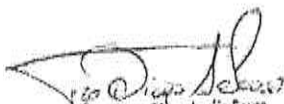
REFORMA E AMPLIAÇÃO ESCOLA ENSINO INFANTIL E FUNDAMENTAL E.E.I.F. SAO VICENTE DE PAULA NA LOCALIDADE DE SANTA RITA DO MUNICIPIO DE SANTANA DO ACARAU-CE.

SETEMBRO DE 2024



DOCUMENTAÇÃO FOTOGRÁFICA

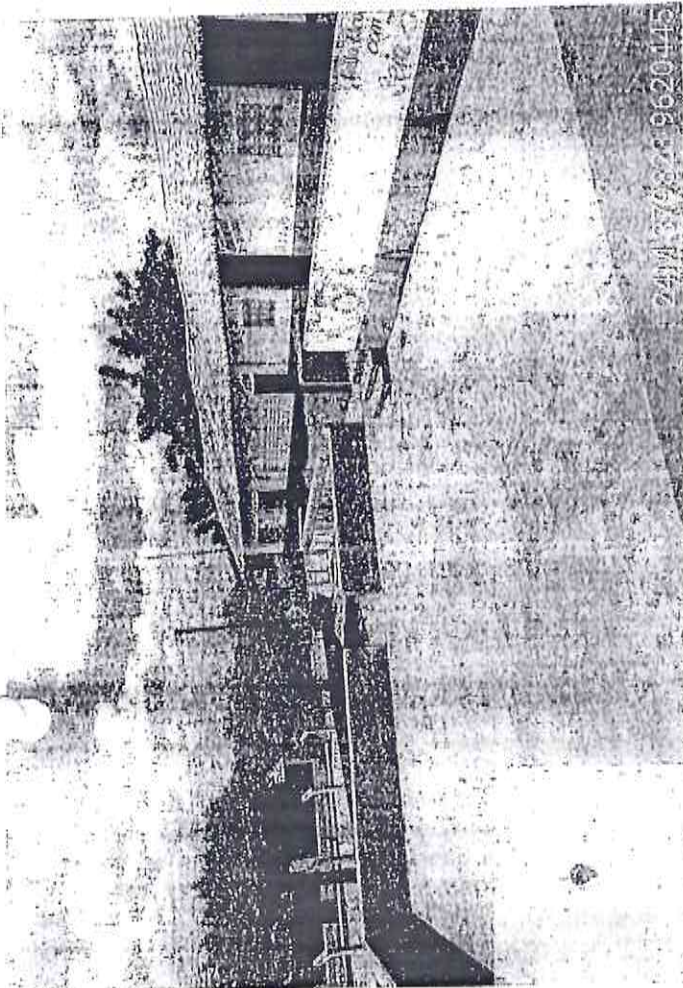



Francisco Dágo Araújo Souza
Engenheiro Civil
CREA/CE: 52.710-D

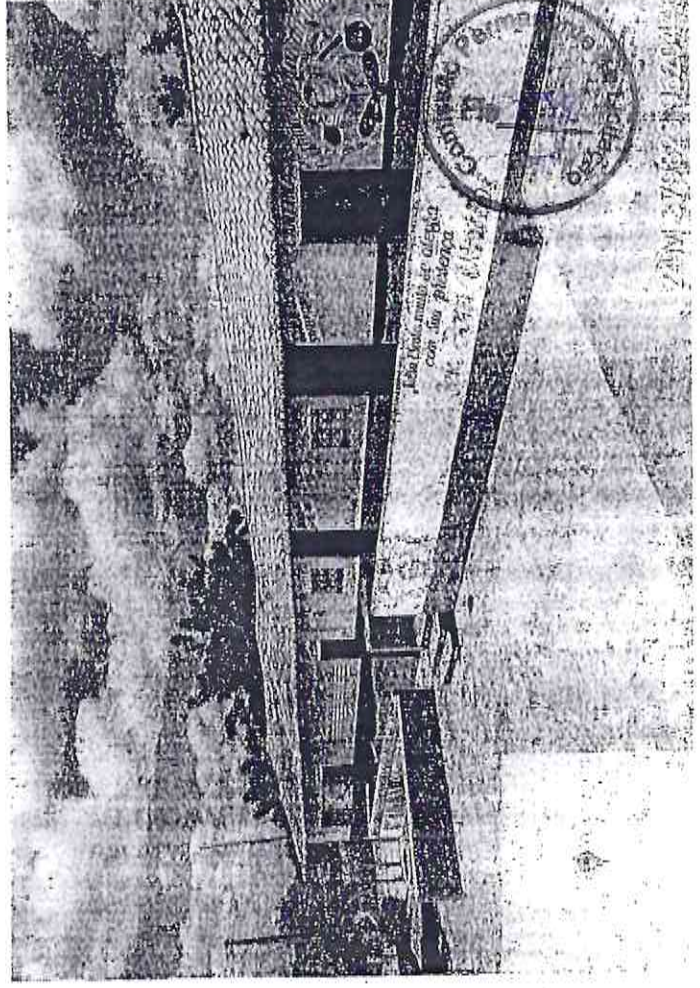
DS SOLUÇÕES EM ENGENHARIA LTDA

Rua Três de Novembro, nº34 Sala 01 – CEP: 62.1500-000 Santana do Acaraú
Estado do Ceará Fone: (88) 9.9632-3394 – CNPJ nº 24.669.607/0001-27
E-mail: dssolucoesemengenharia@outlook.com

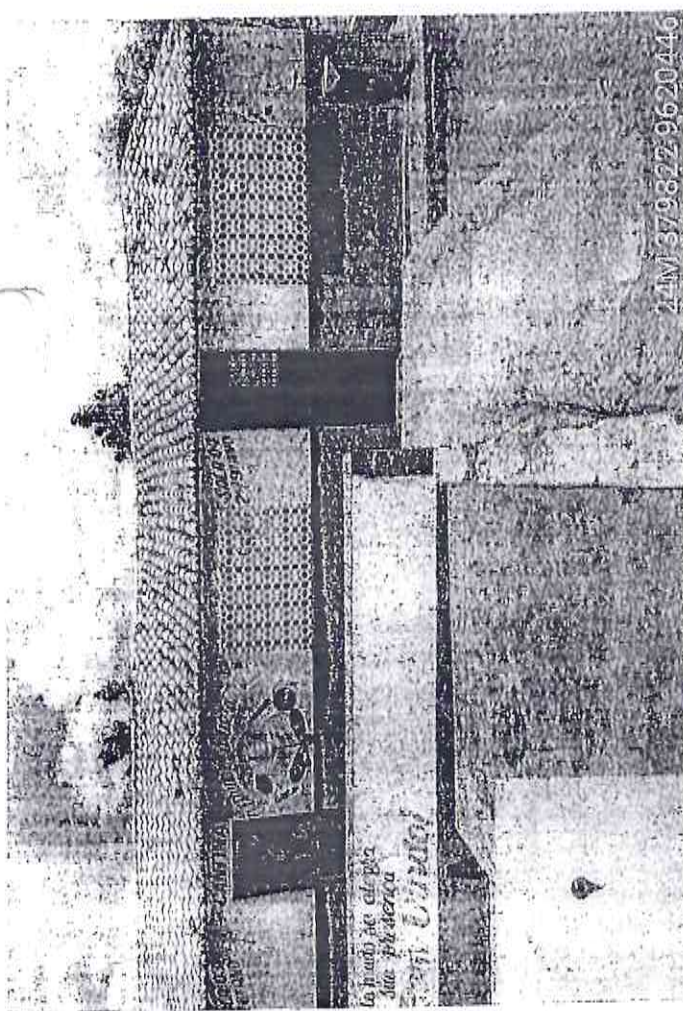
+I-c | yvwi



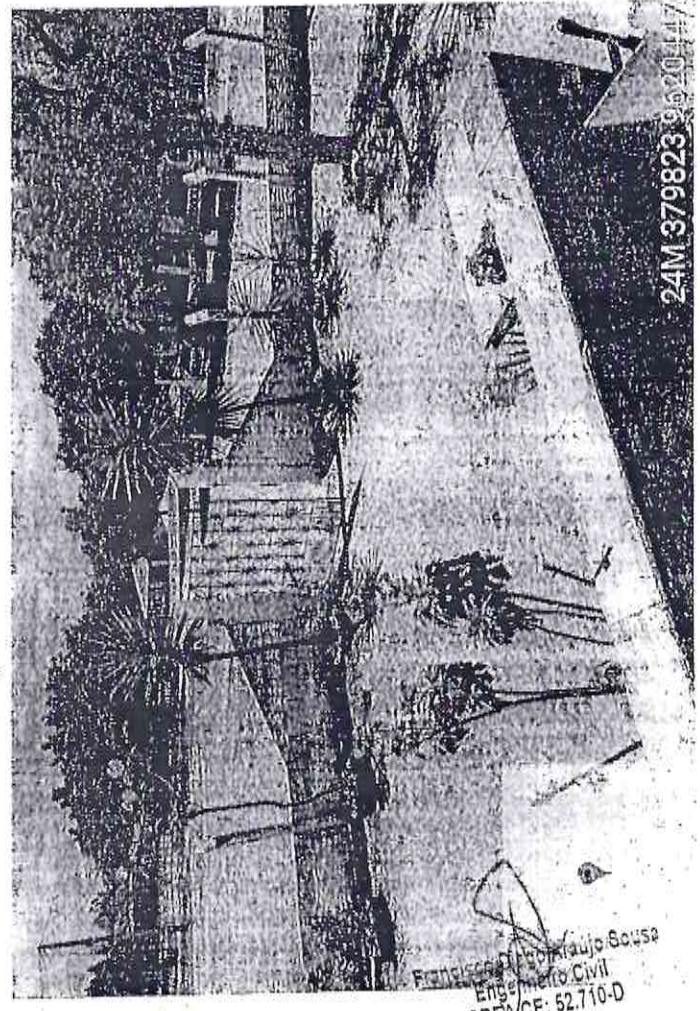
24M 379822 9620445



24M 379822 9620445

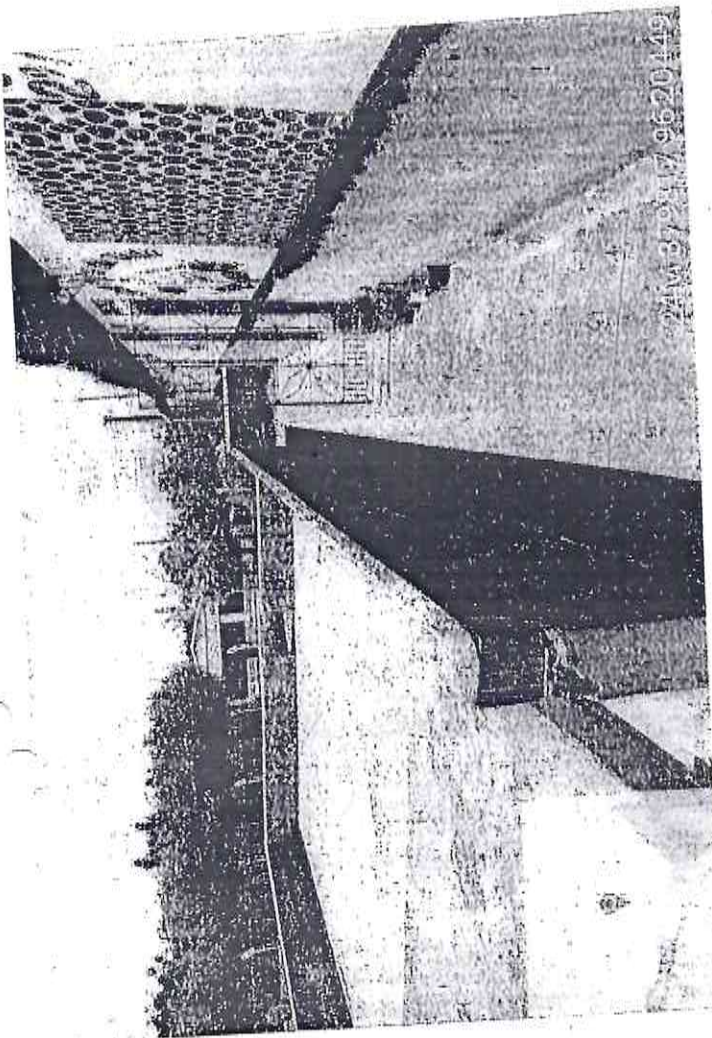


24M 379822 9620446

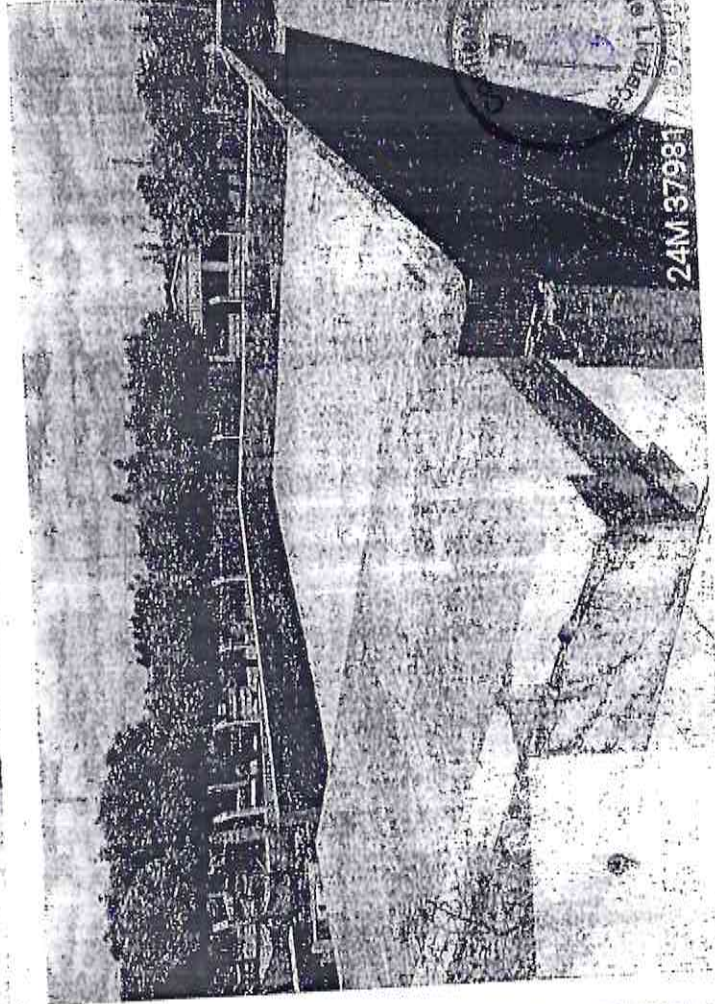


24M 379823 9620447

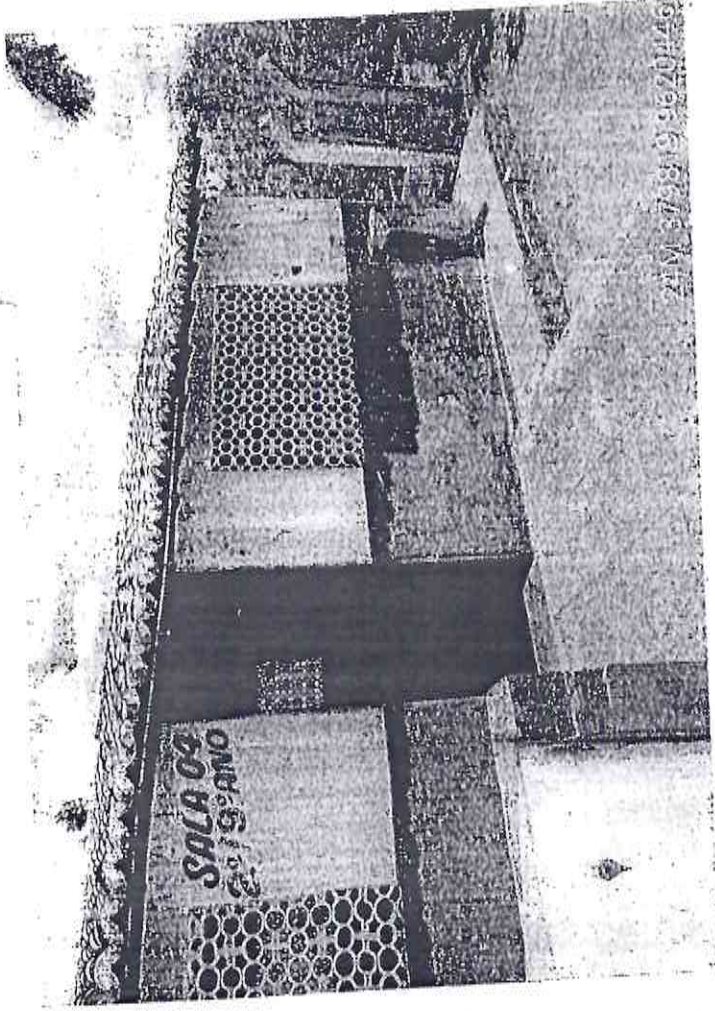
Francisco de Araujo Gouso
Ingeniero Civil
CREACE: 52.710-D



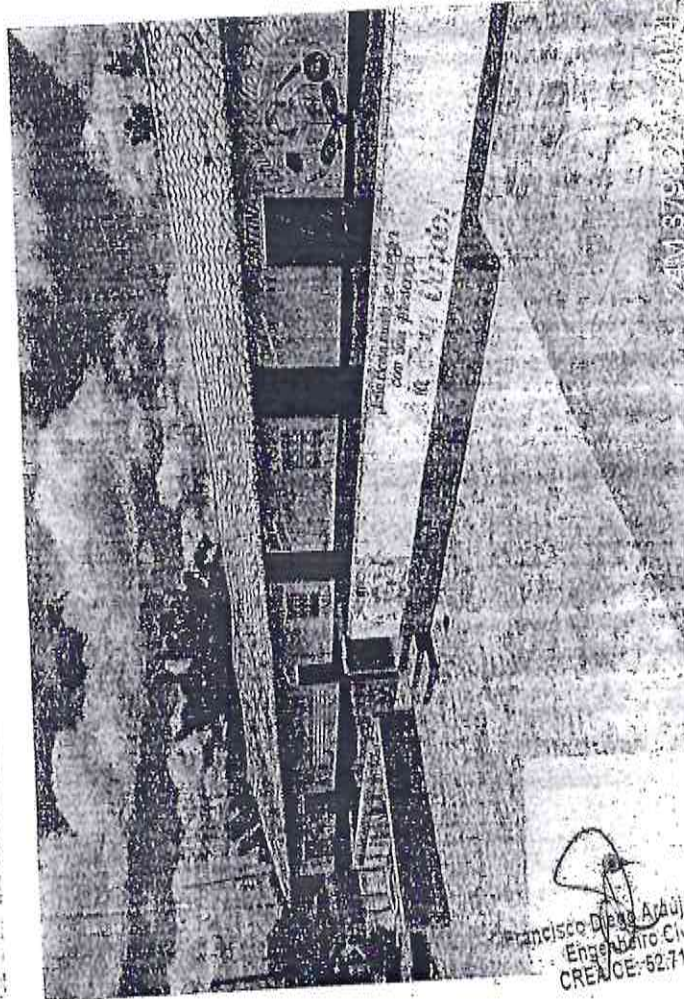
24M 37983



24M 37983



24M 37983



24M 37983

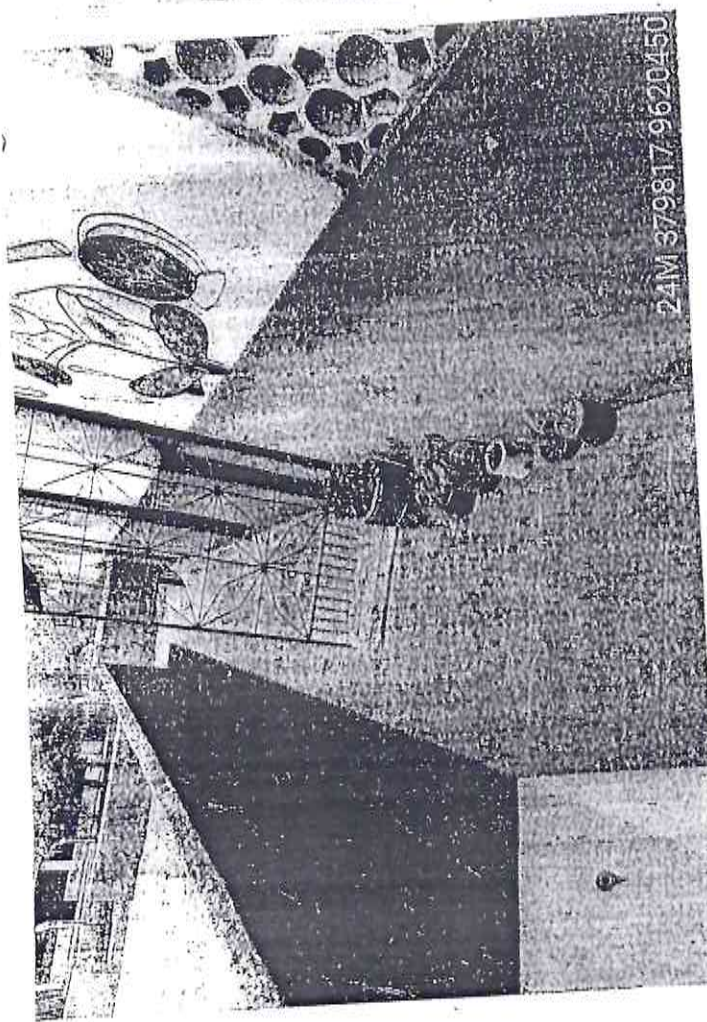
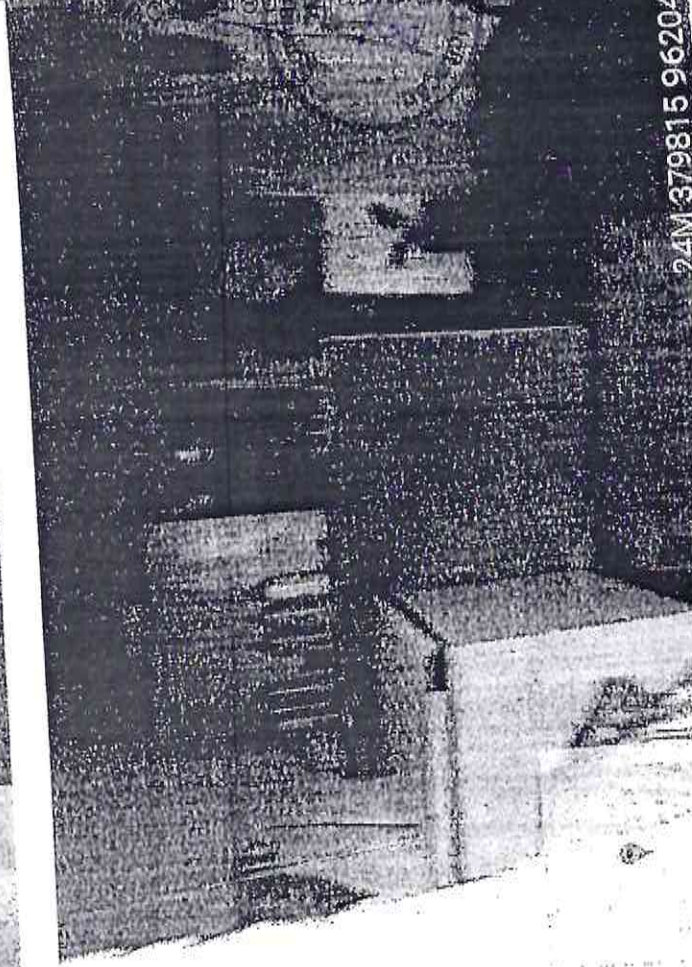
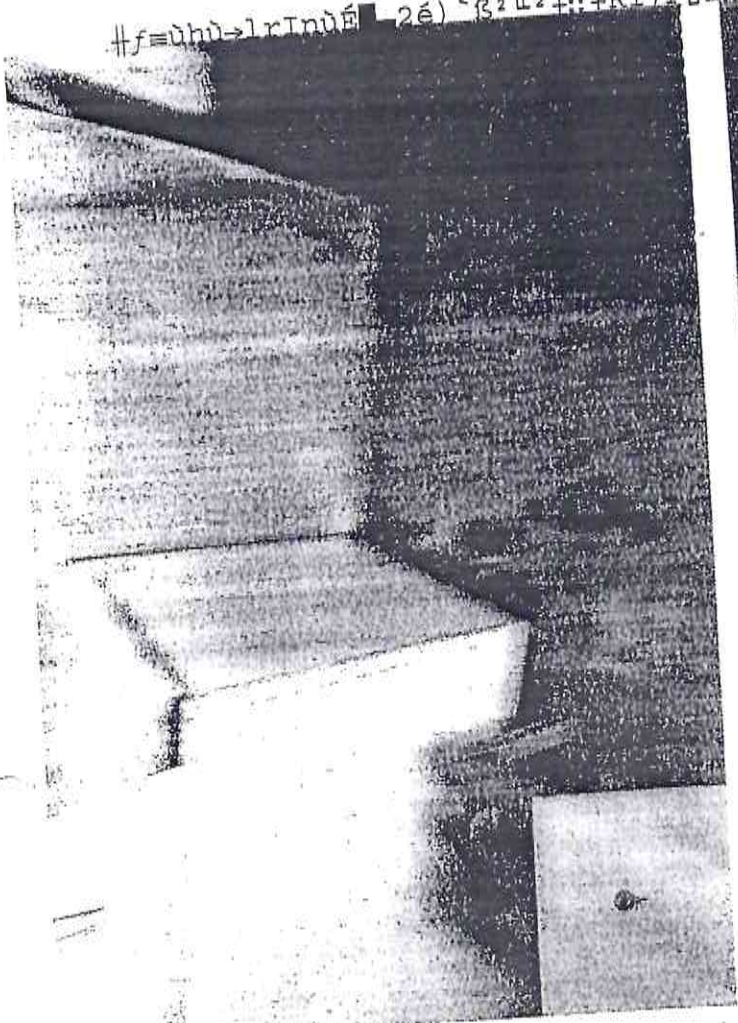
Este tratamiento de agua
con luz
de Luz de Espera.

Francisco Diego Arduj
Ingeniero Civil
CRECE-62.71

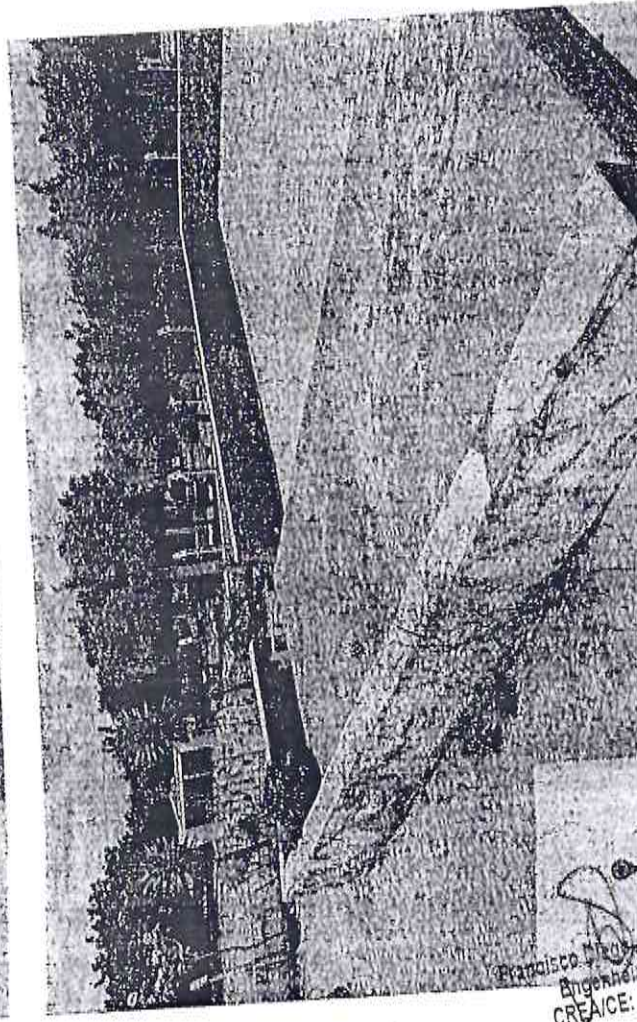
#f=0h0→lrIn0E 2é) ~β2 L2 +::+Ri7TΣΣ::▲Hv5=

Permanente

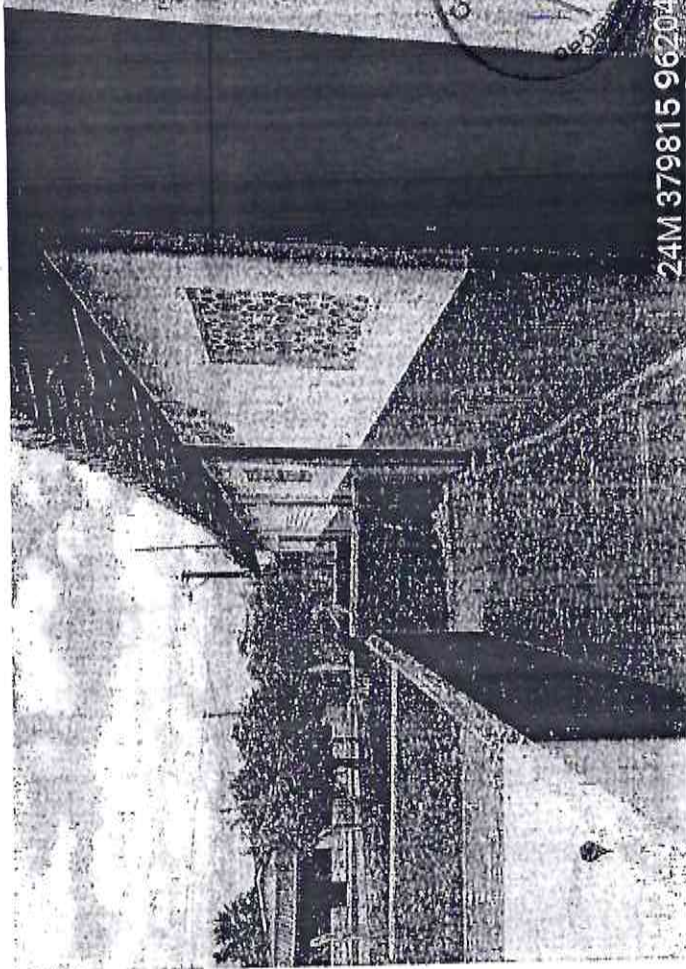
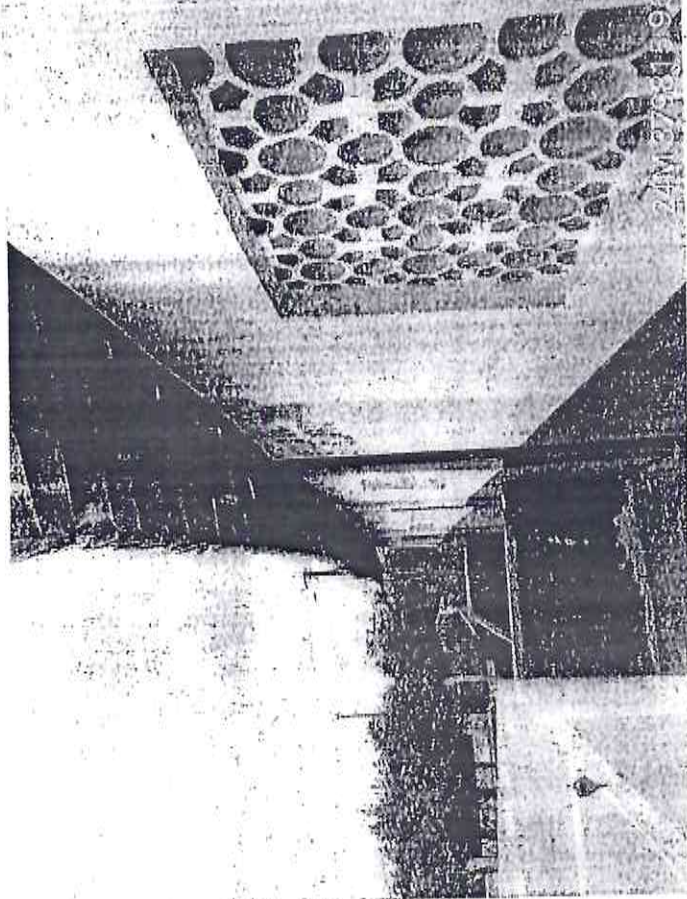
24M 379815 9620447



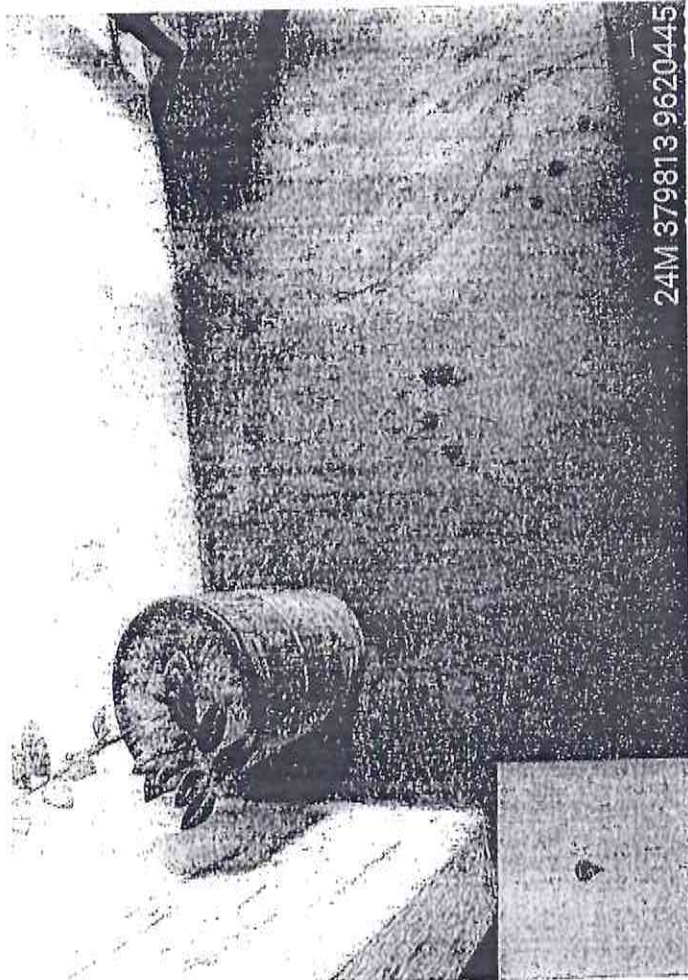
24M 379817 9620450



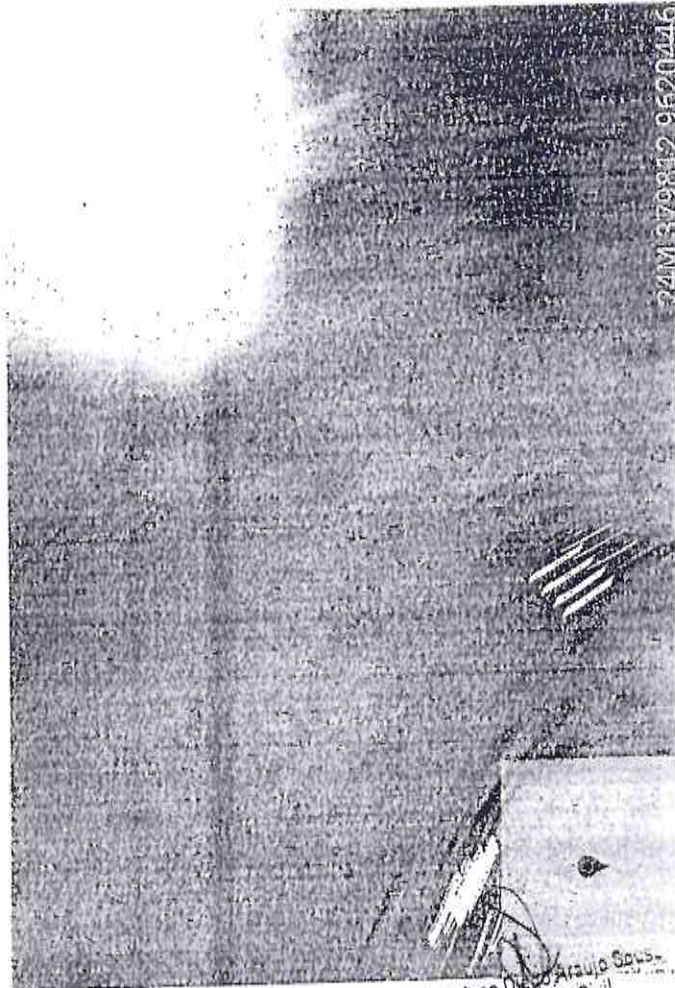
FRANCISCO MORA
Ingeniero
CREACE



24M 379815 9620444



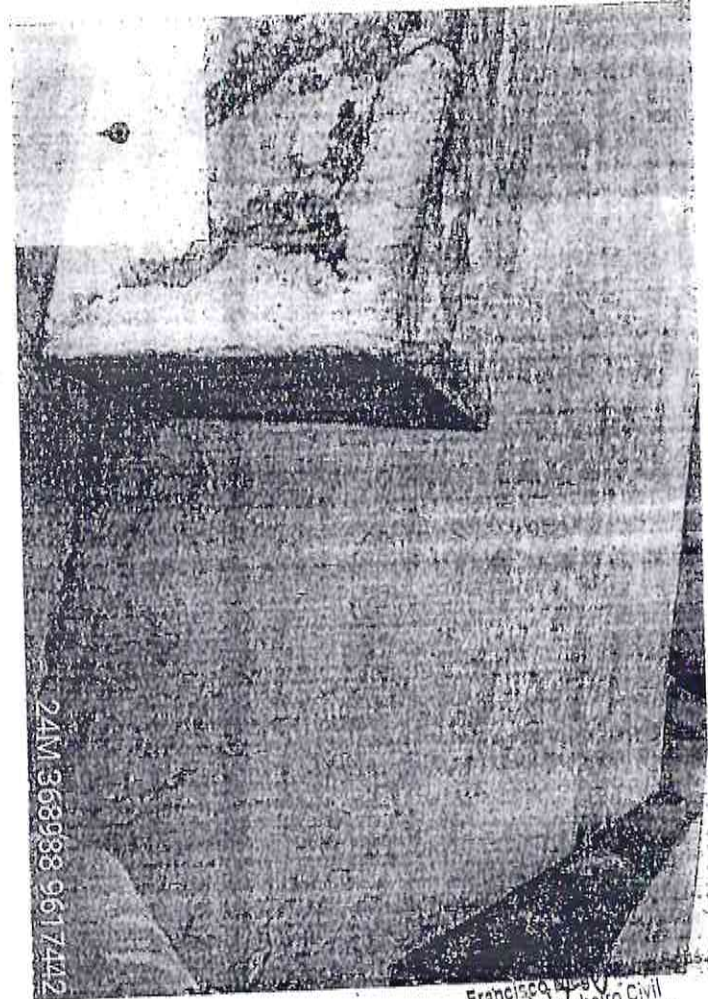
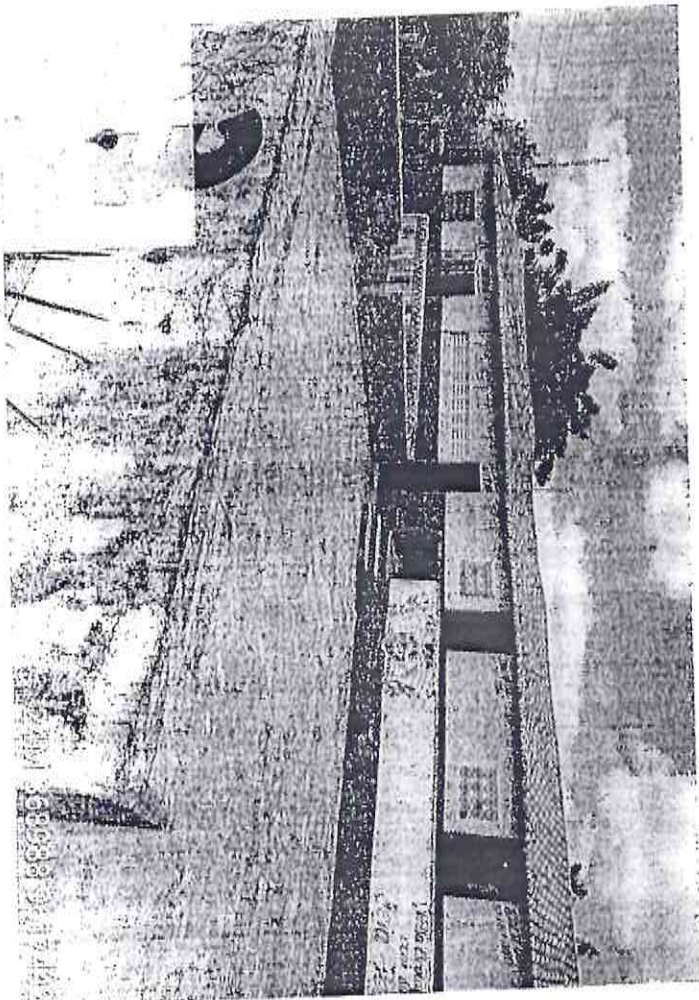
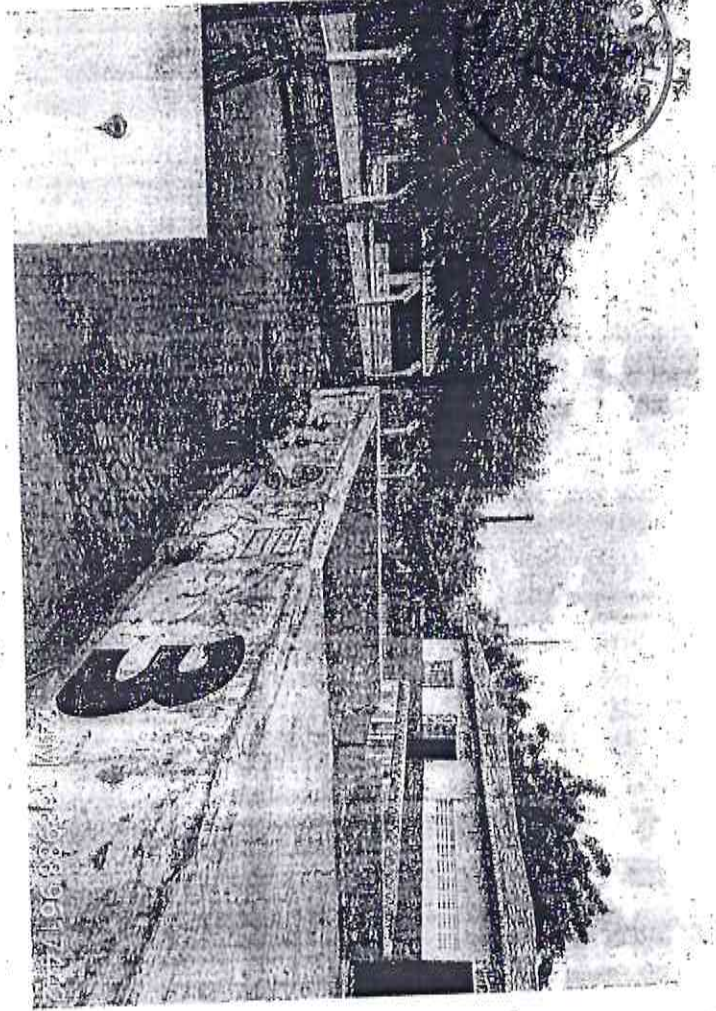
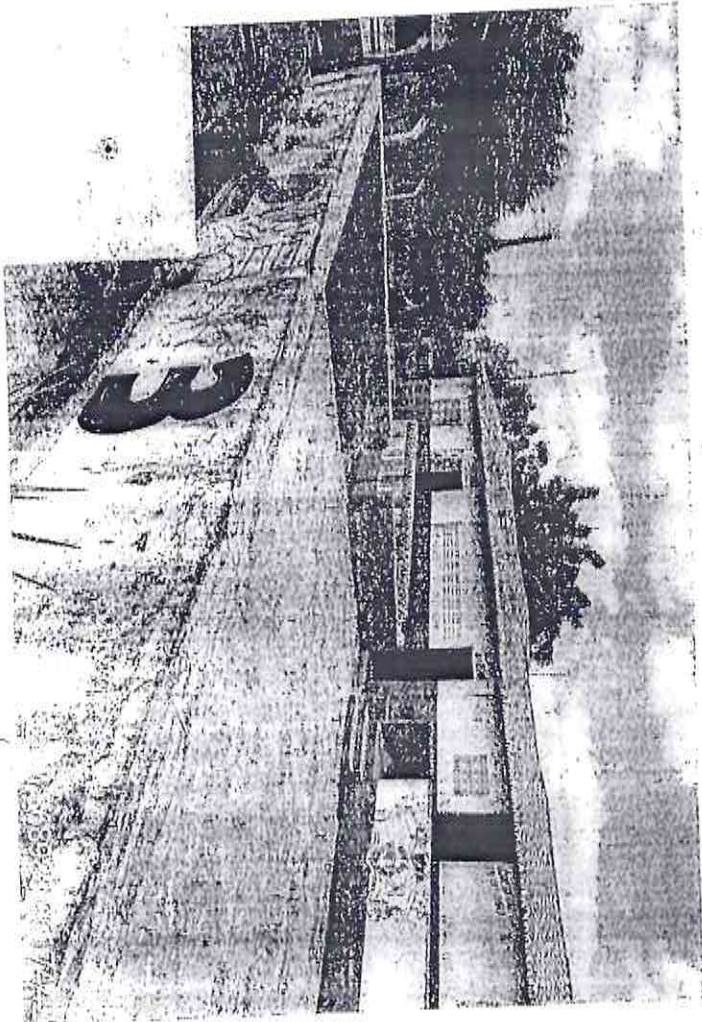
24M 379813 9620445



24M 379812 9620446

Francisco Diego Araujo Sousa
Engenheiro Civil
CREMICE: 52.710-D

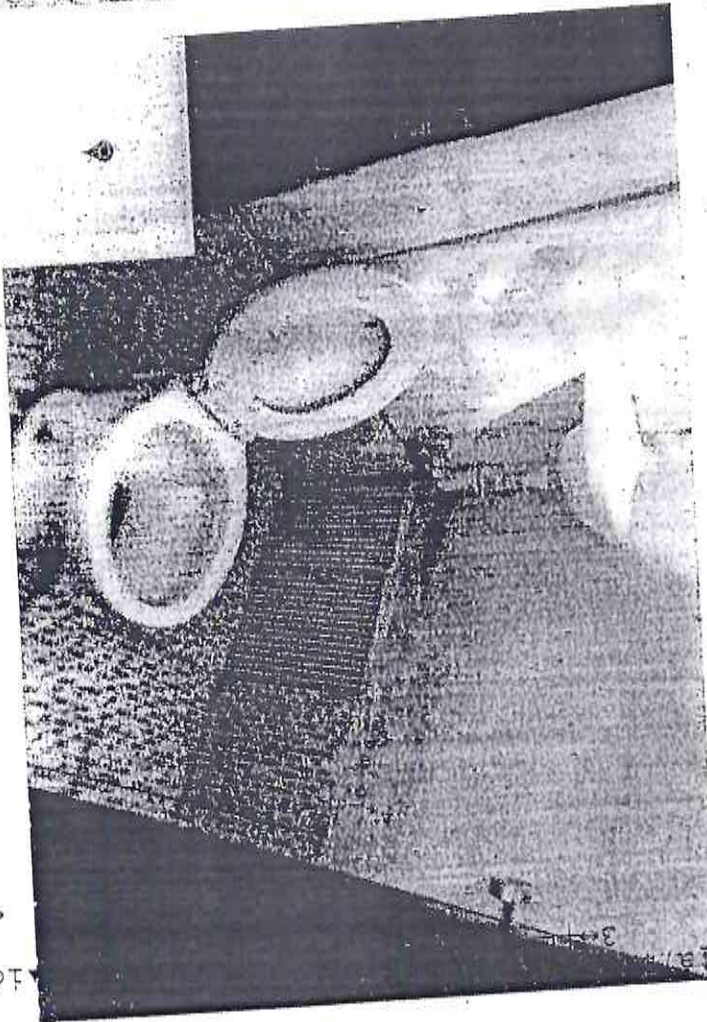
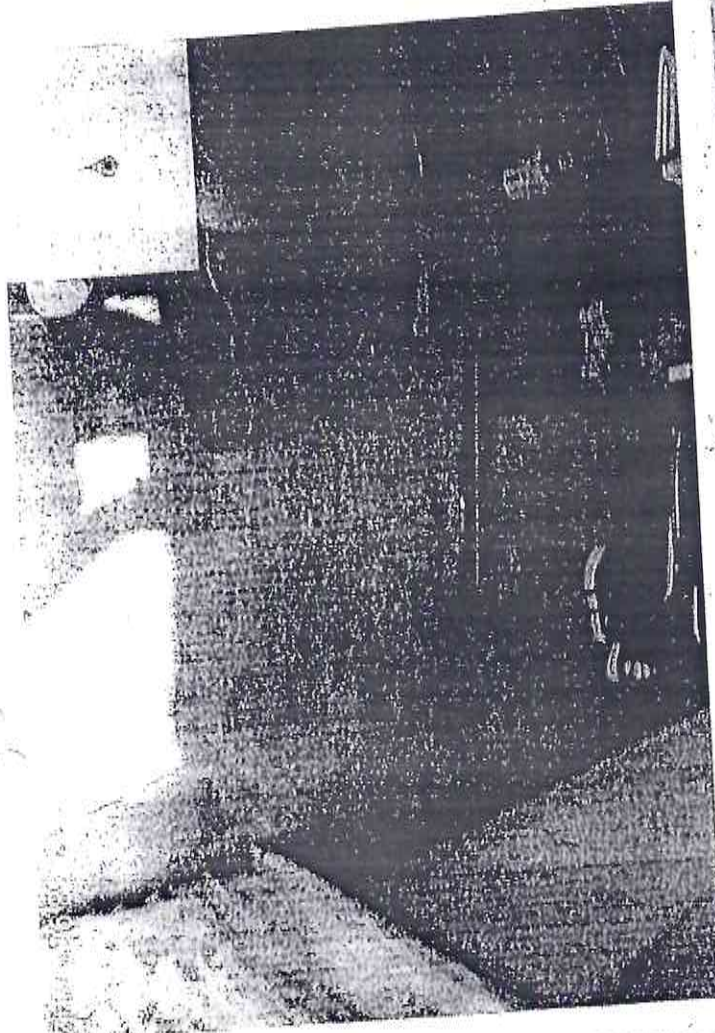
permanente



241M 368938 961 7442

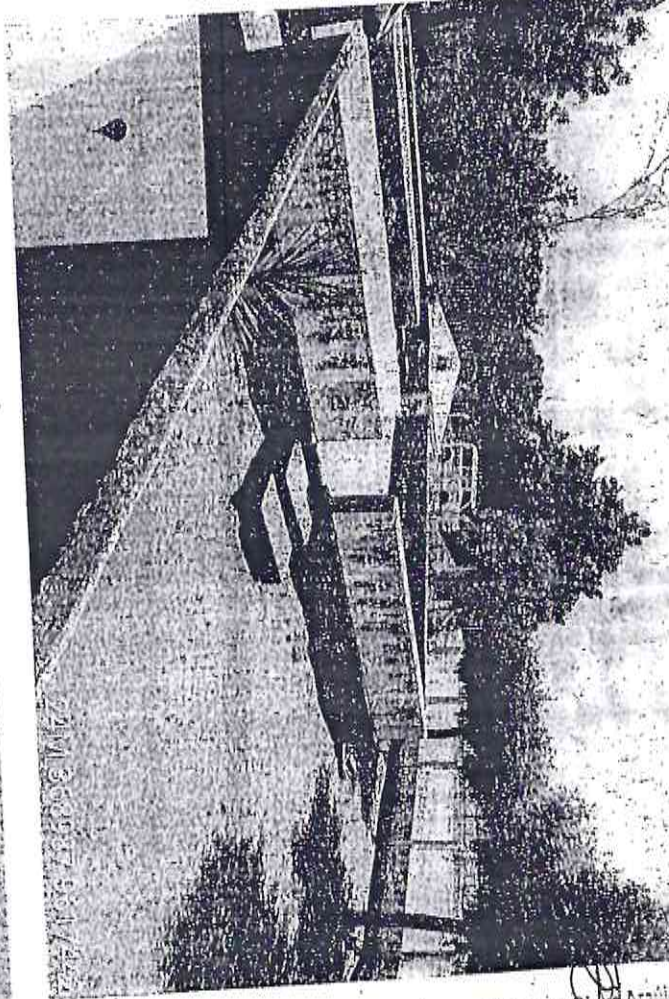
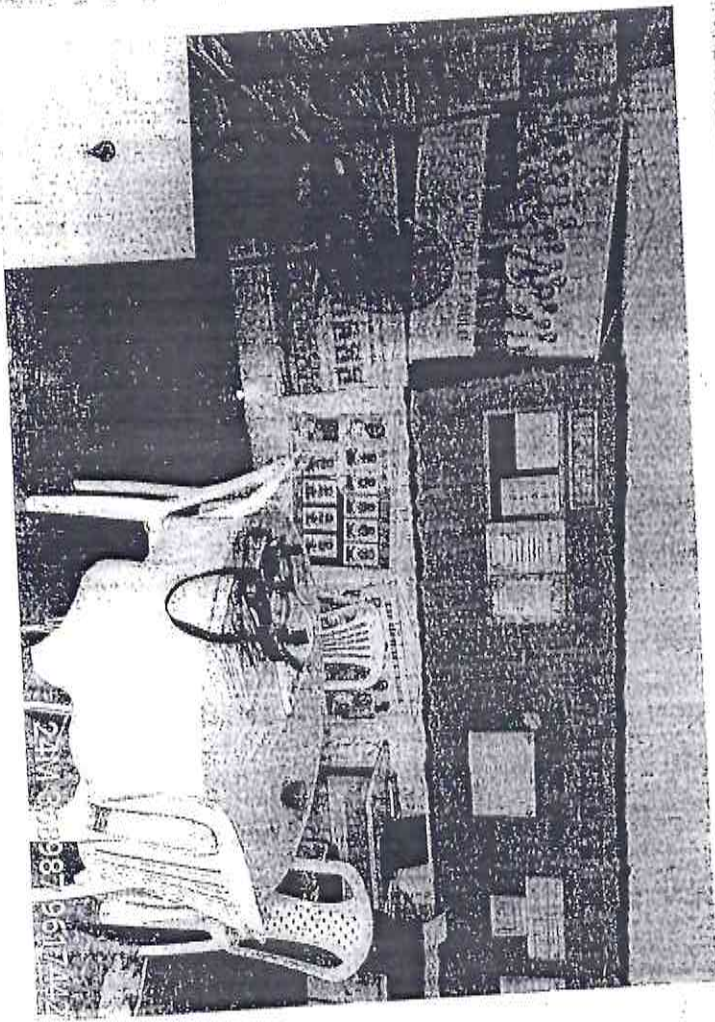
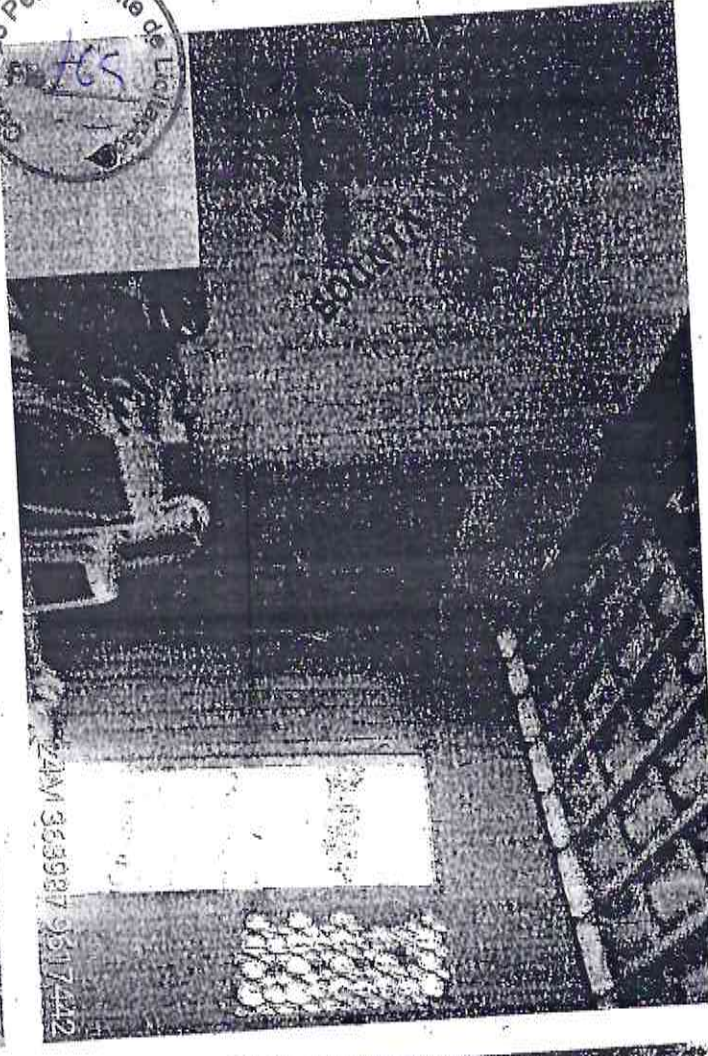
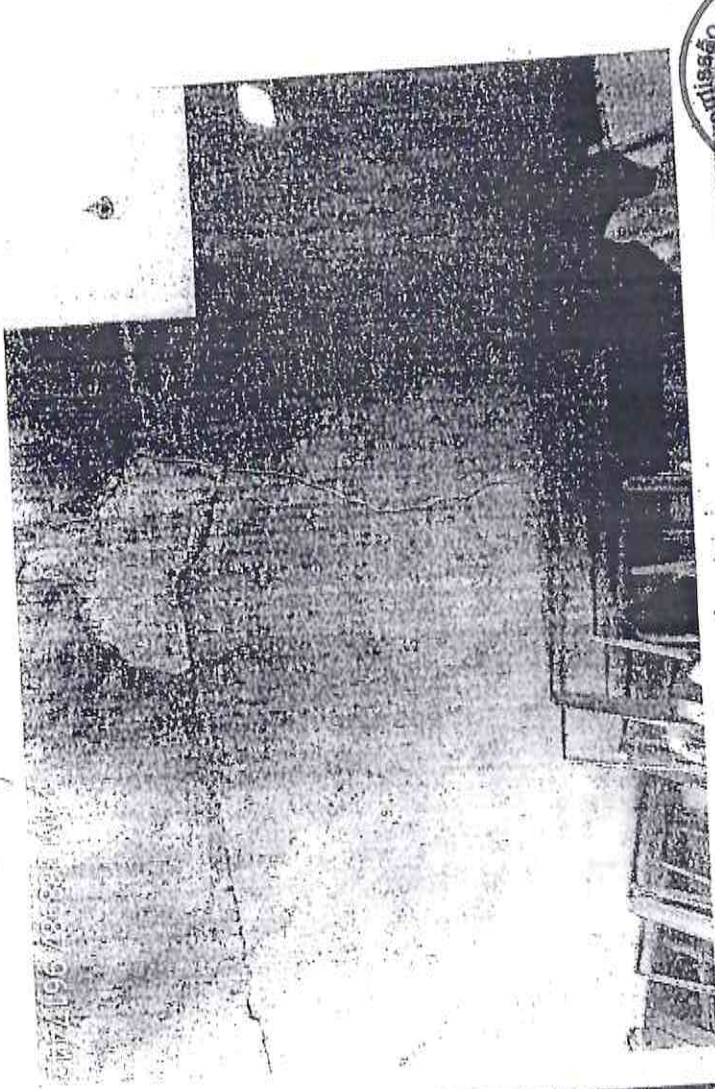
Francisco de
Engenheiro Civil
CREA/CE: 52.710-D

Comitê Permanente de Licitação
364



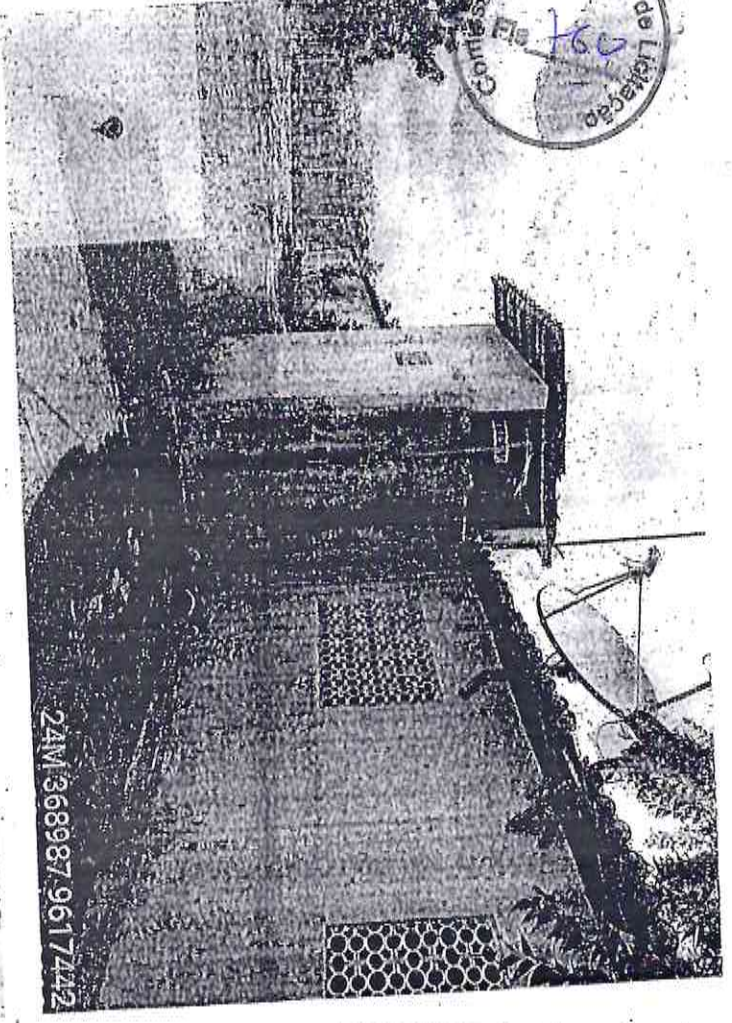
Francisco de Paula
Engenheiro-Civil
CREAGE: 52.710-D

Comissão Permanente de Licitação
AGS

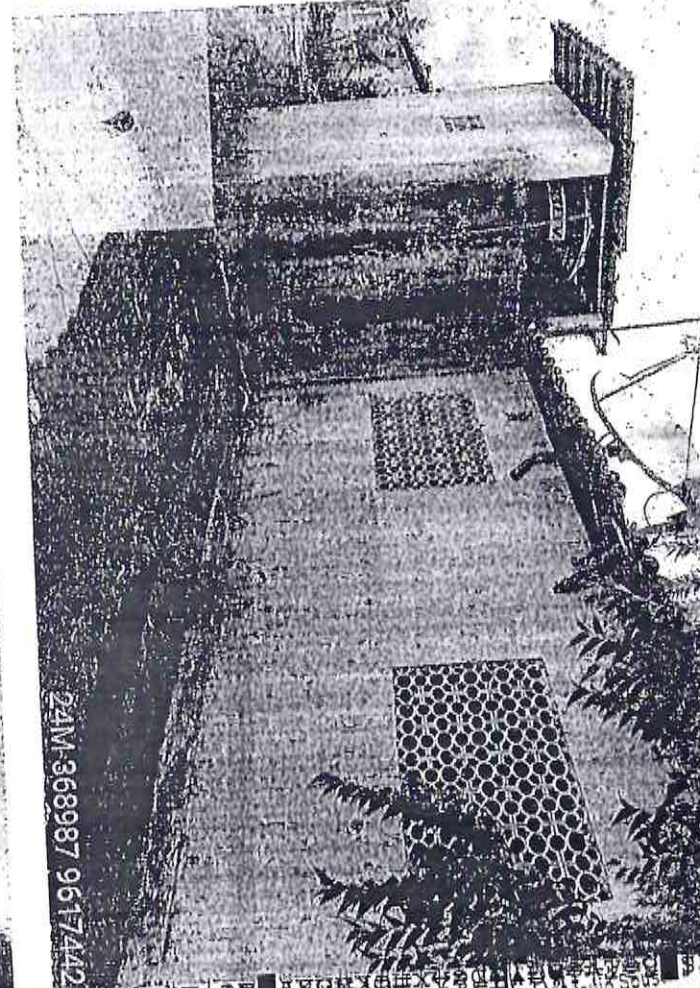


Francisco Diego Araújo
Engenheiro Civ
CREA/CE: 52.71

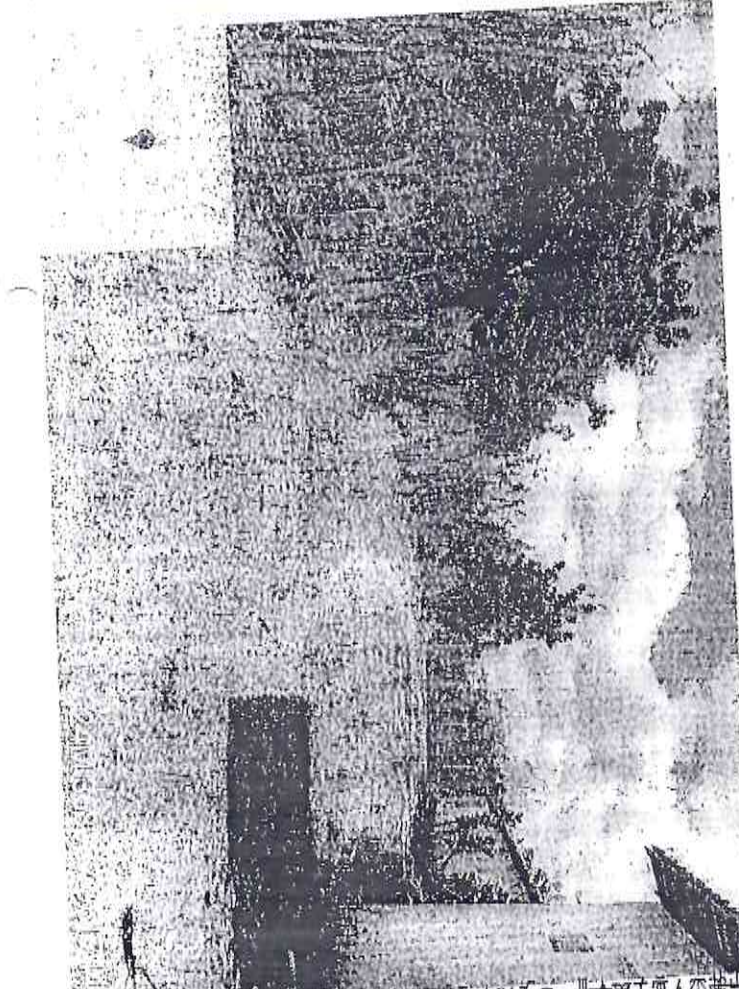
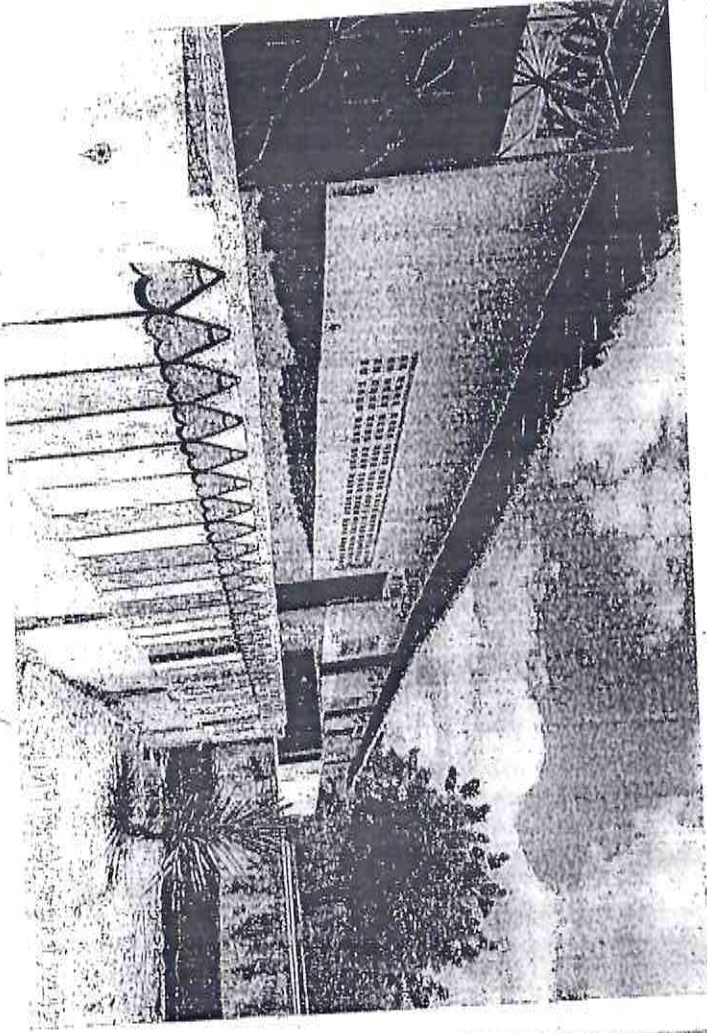
Comitê Permanente de Licitação
Fls. 760



24M-368987-9617442

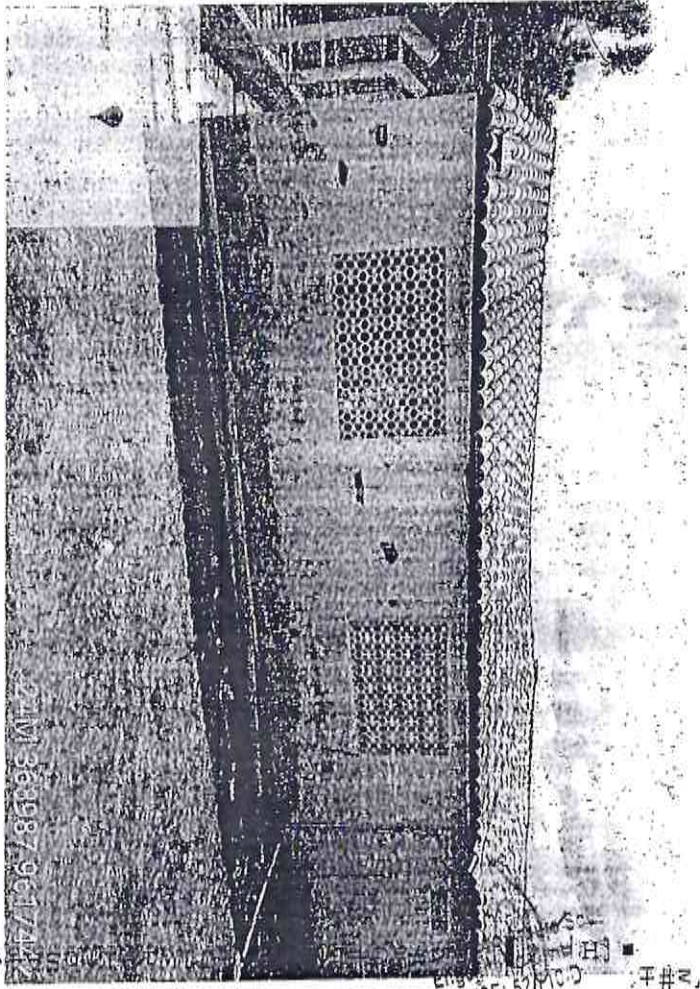
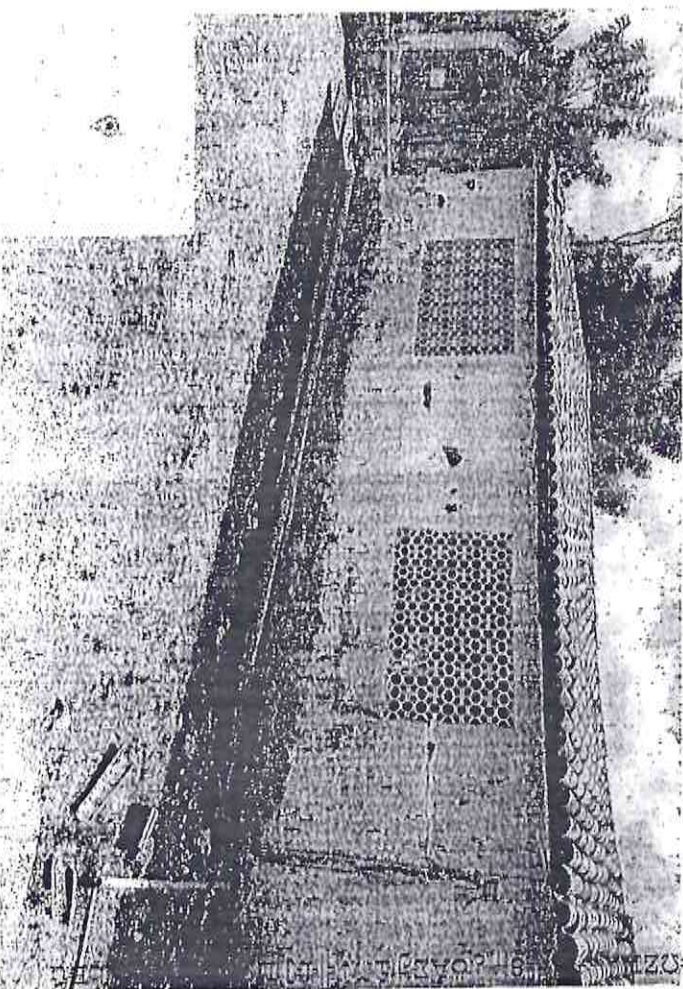
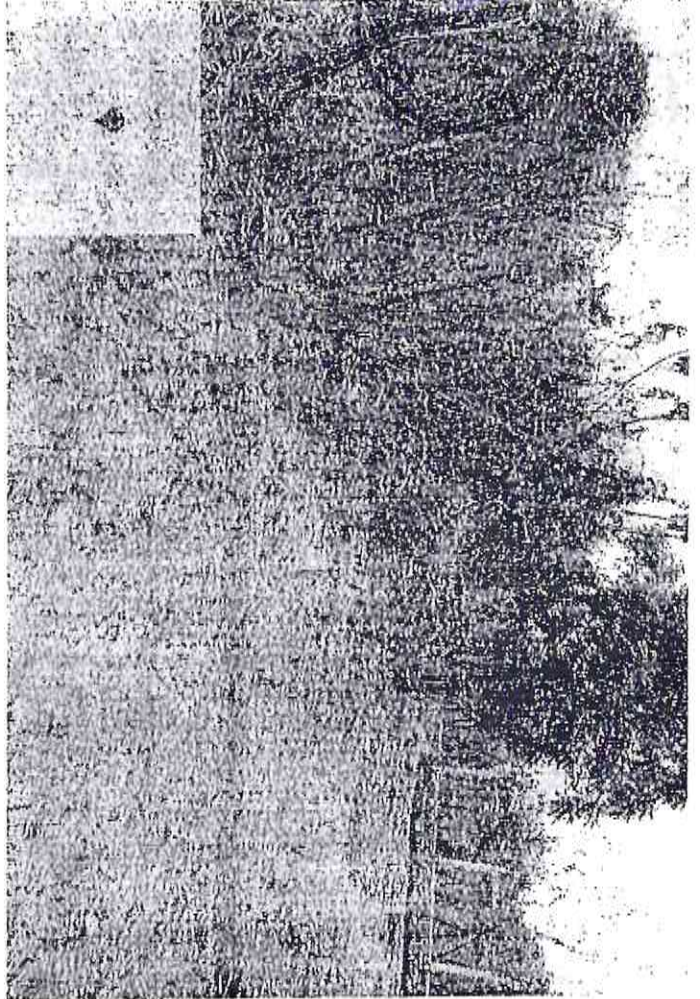
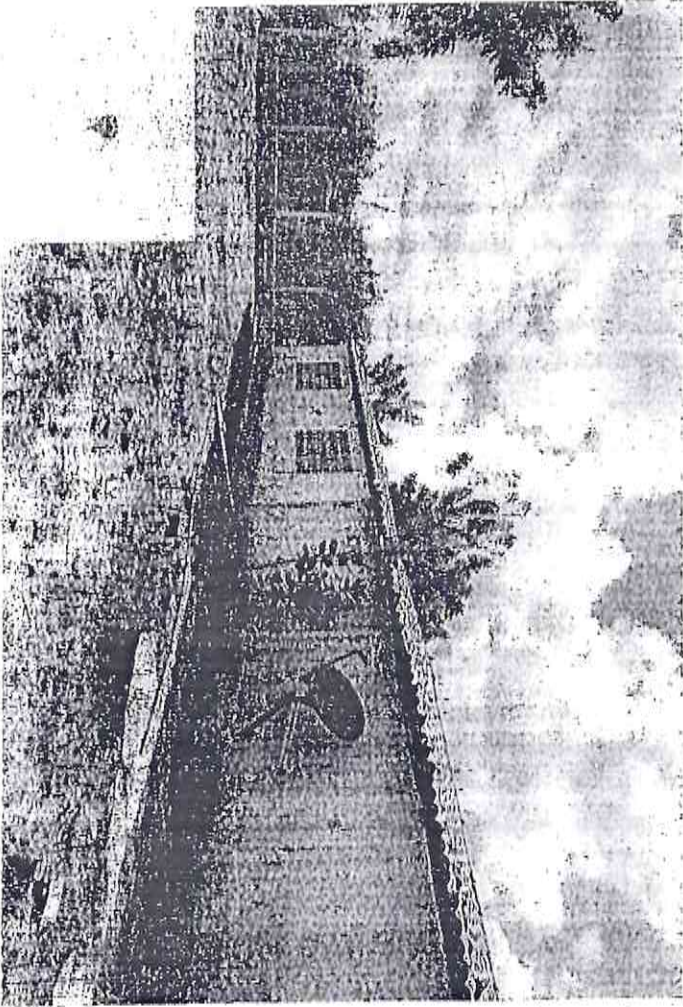


24M-368987-9617442

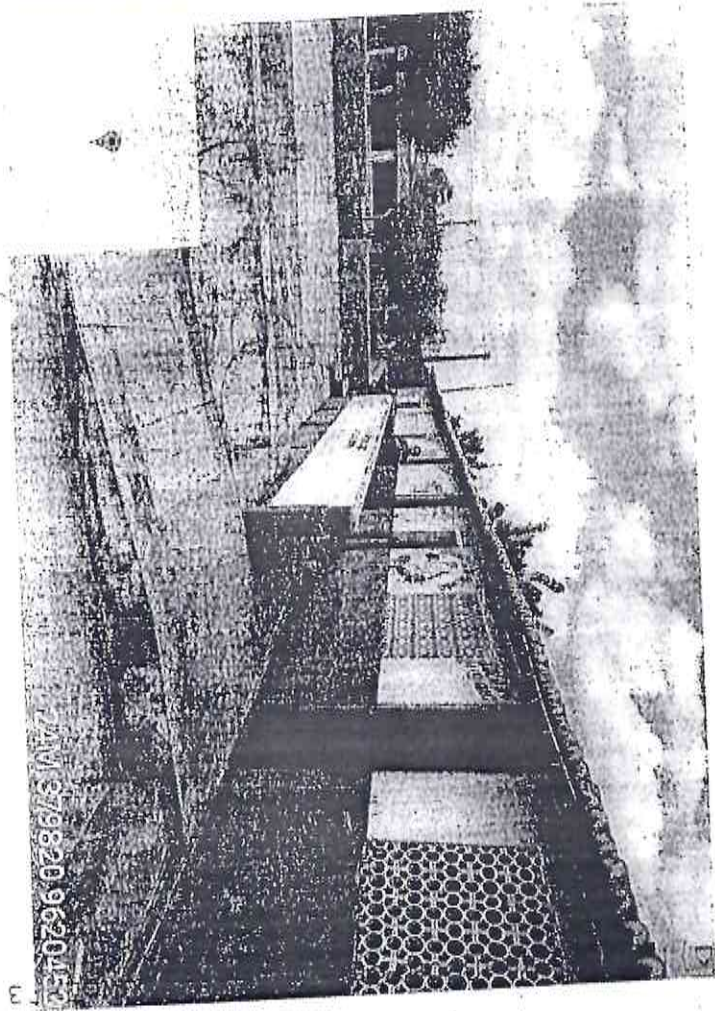
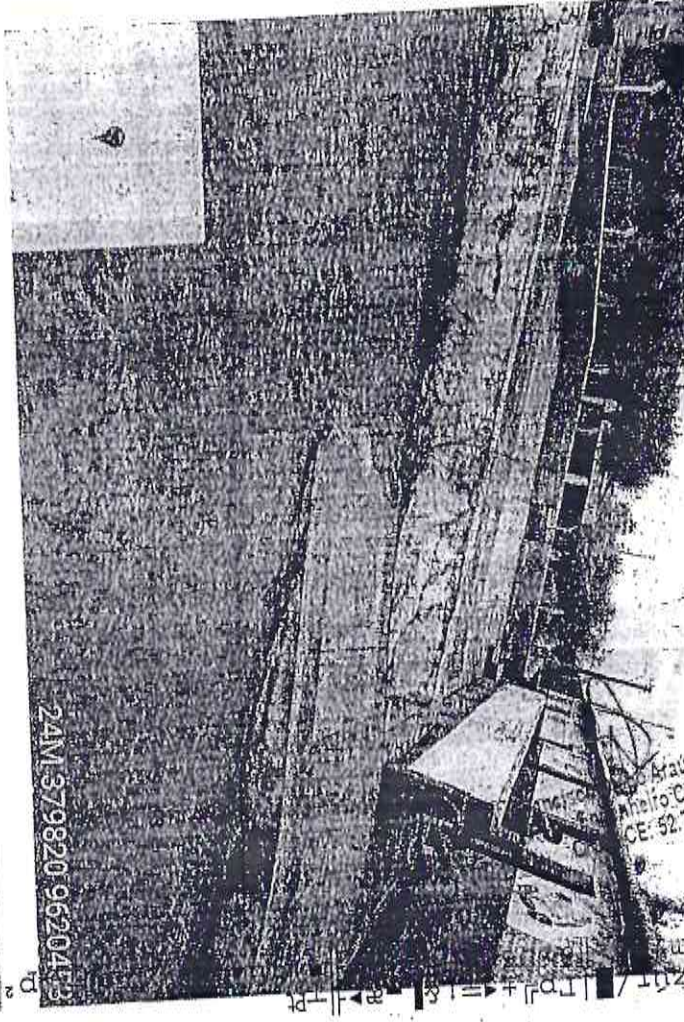
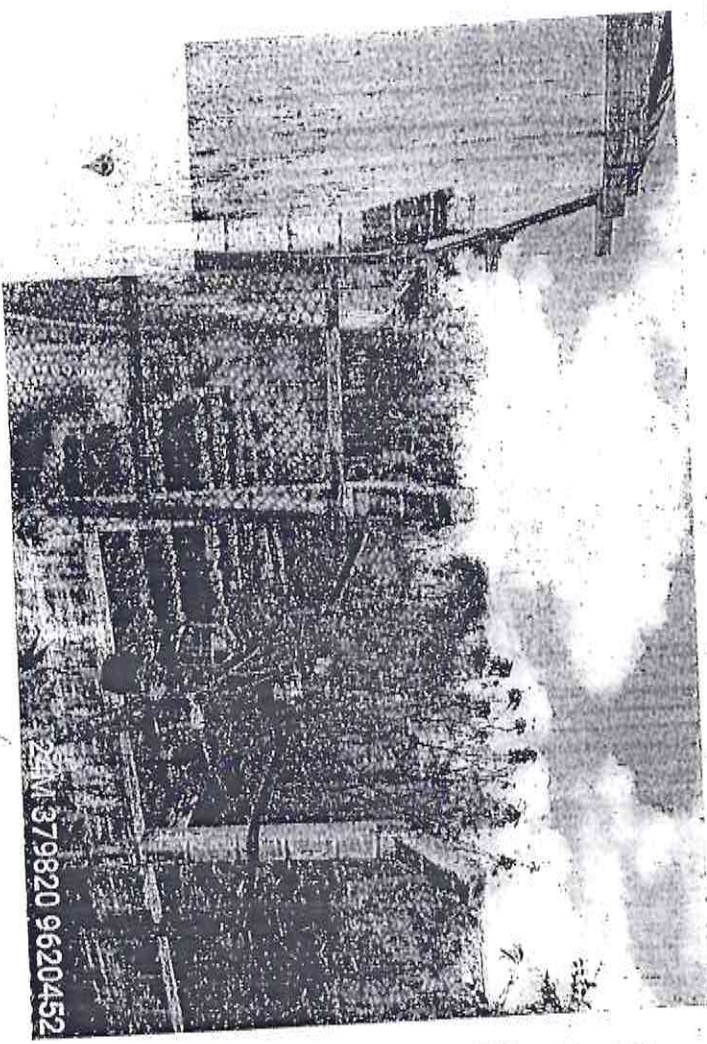
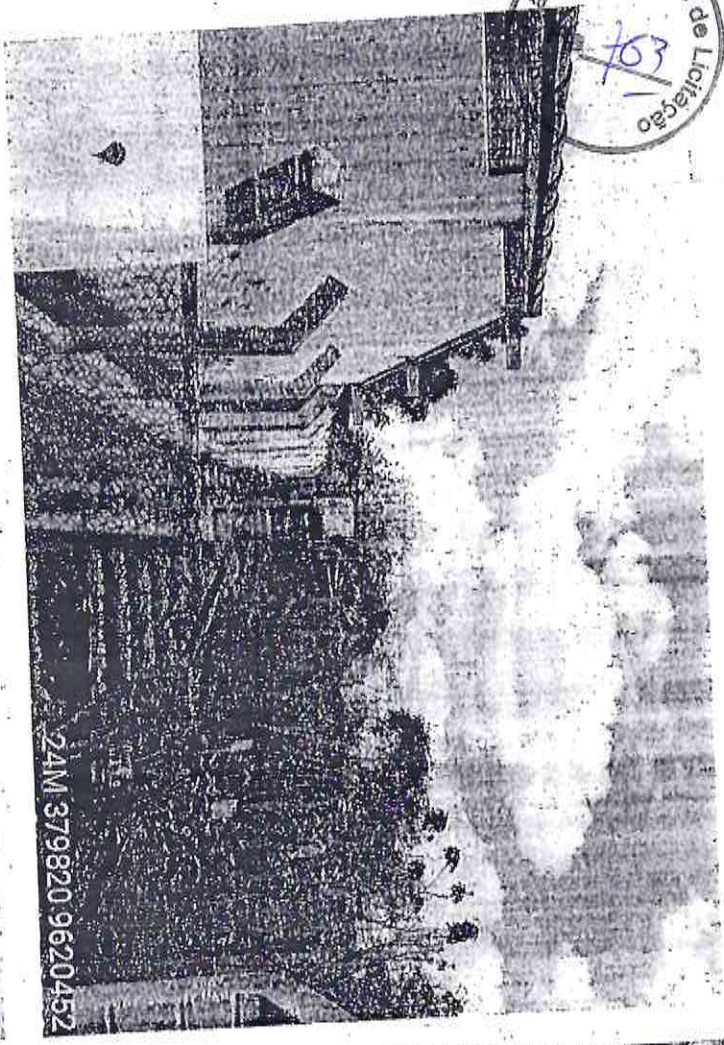


Francisco Dias Afonso
Engenheiro Civil
CREA/CE: 52.710-D

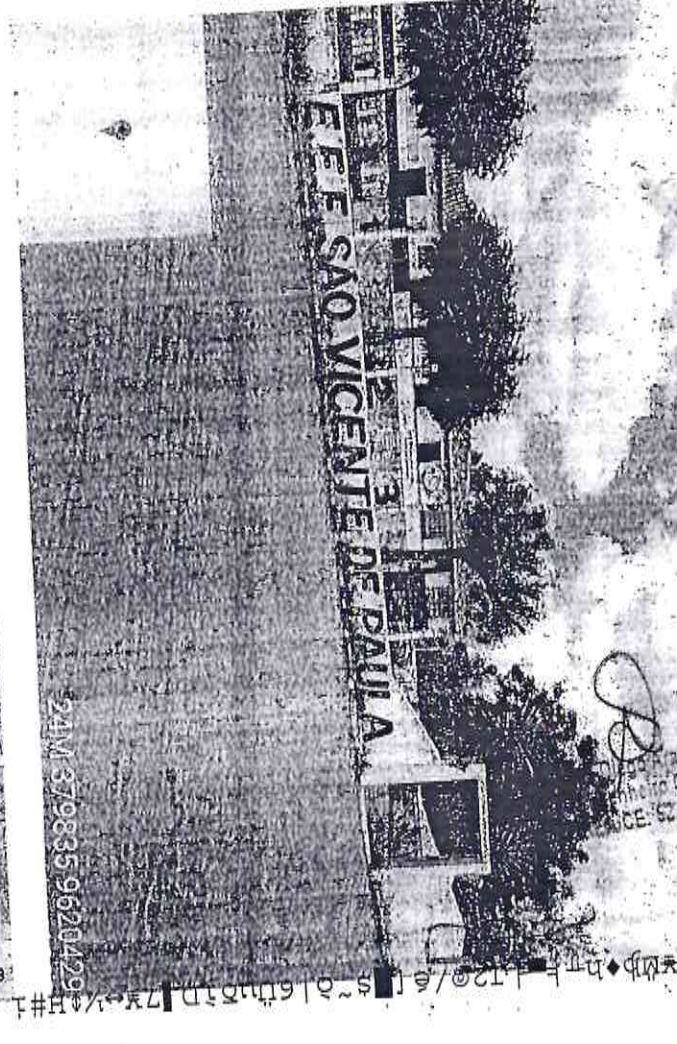
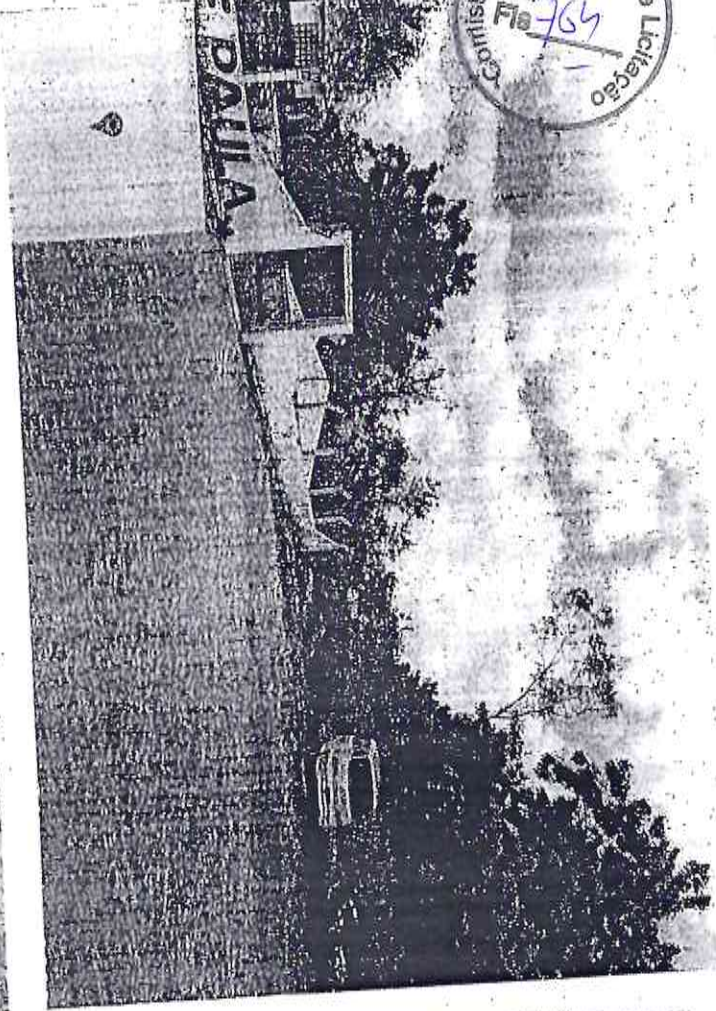
ção Permanente de



Eng. ...
CREA:CE: 52/100

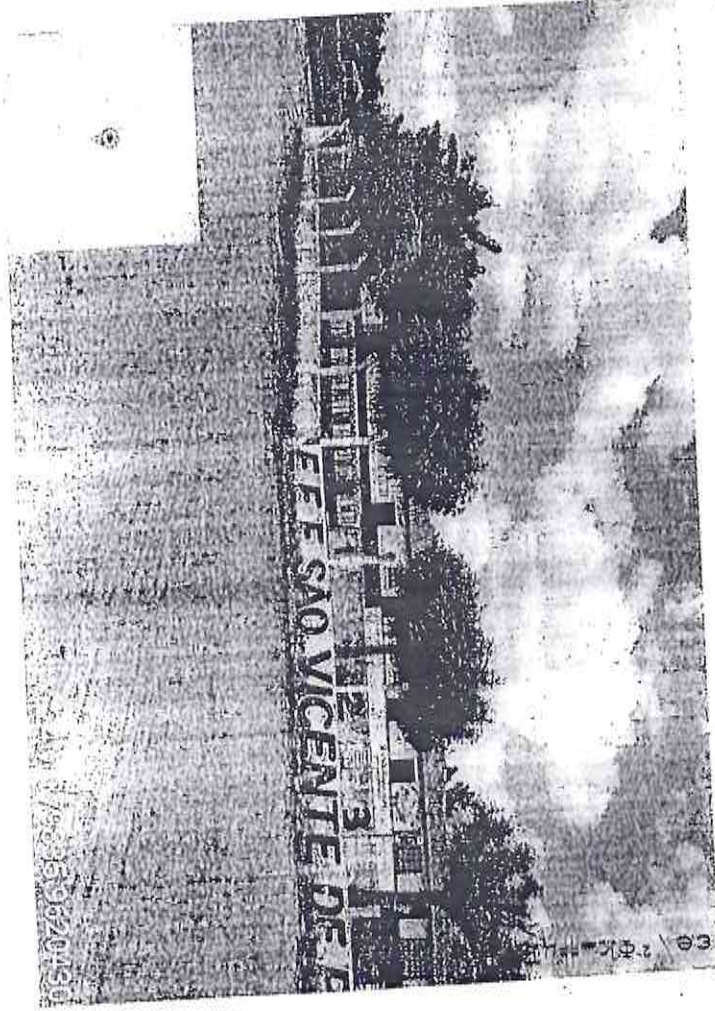
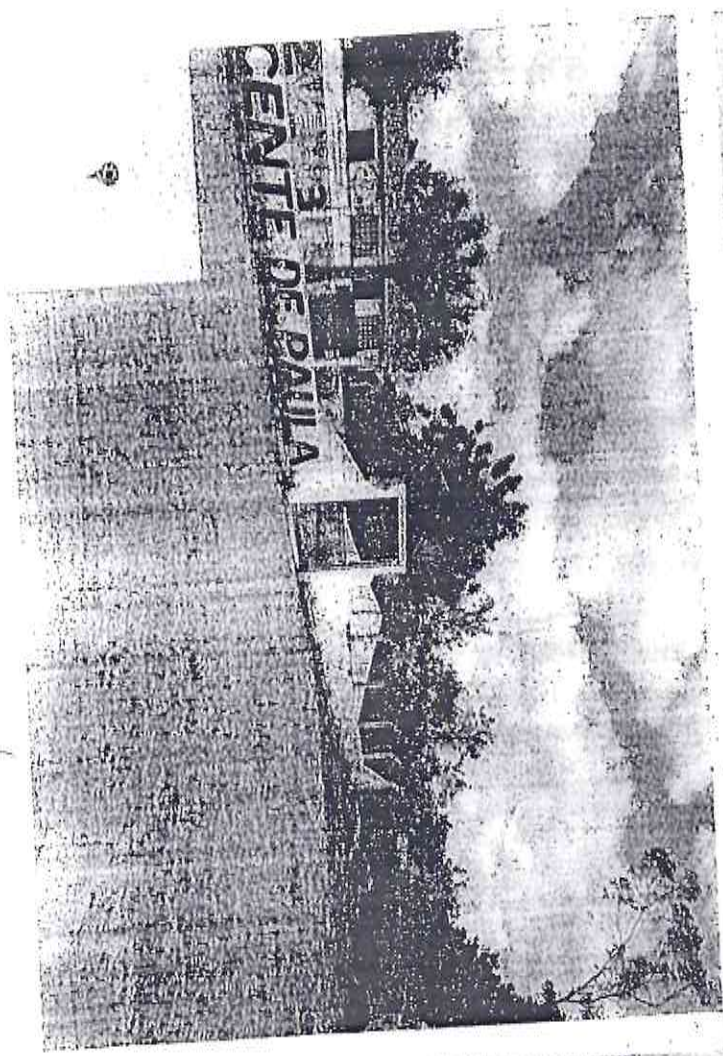


Comissão Permanente de Licitação
Fls 764

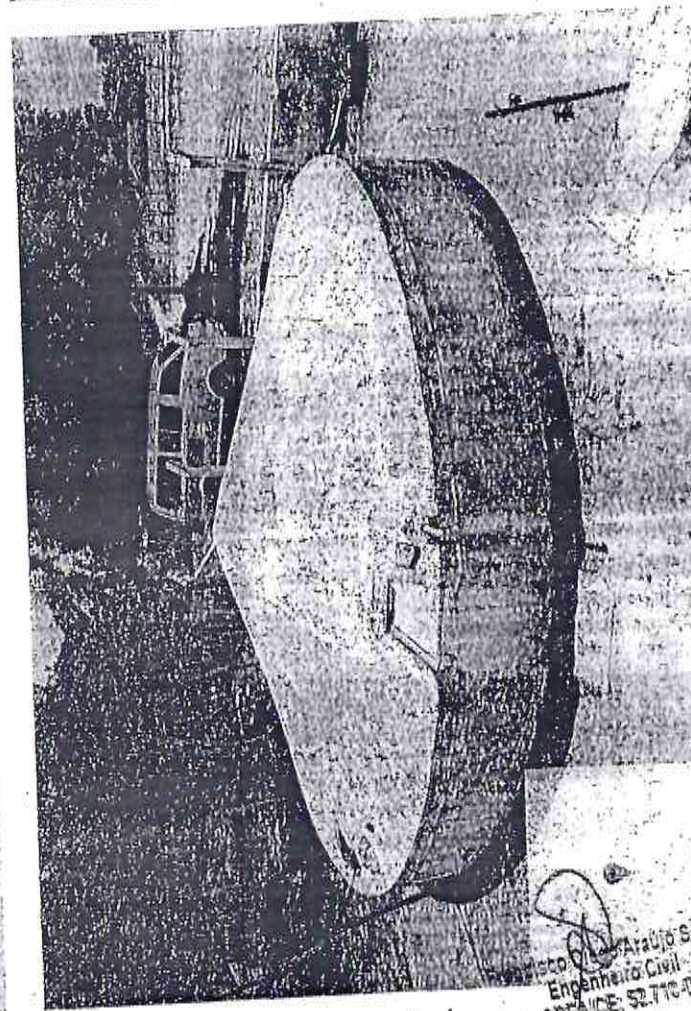
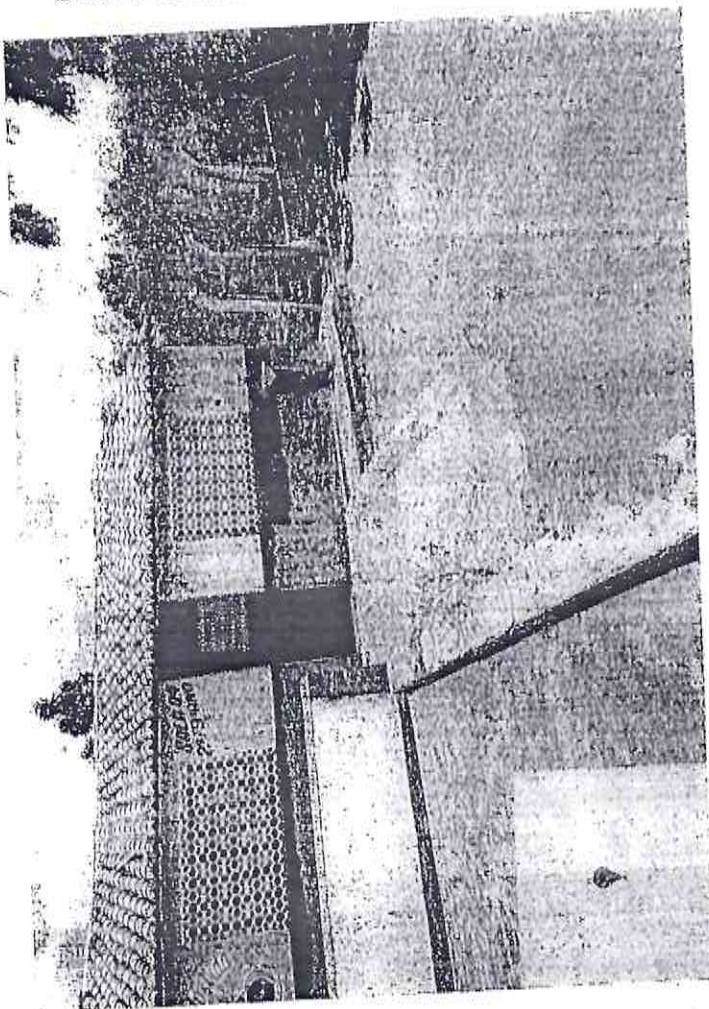
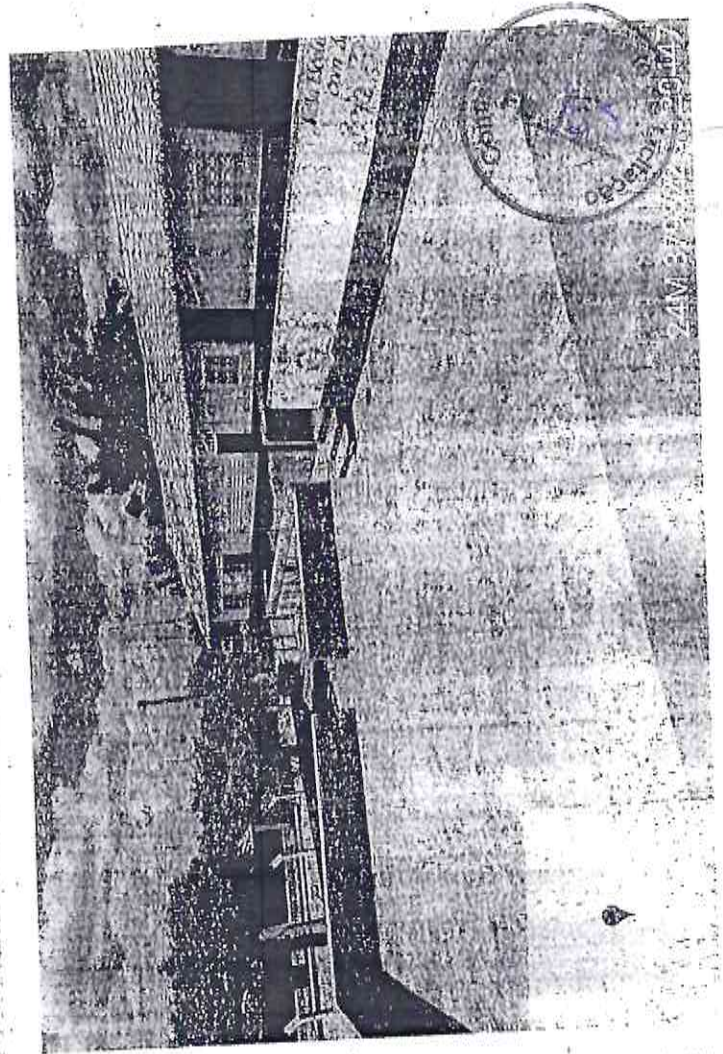
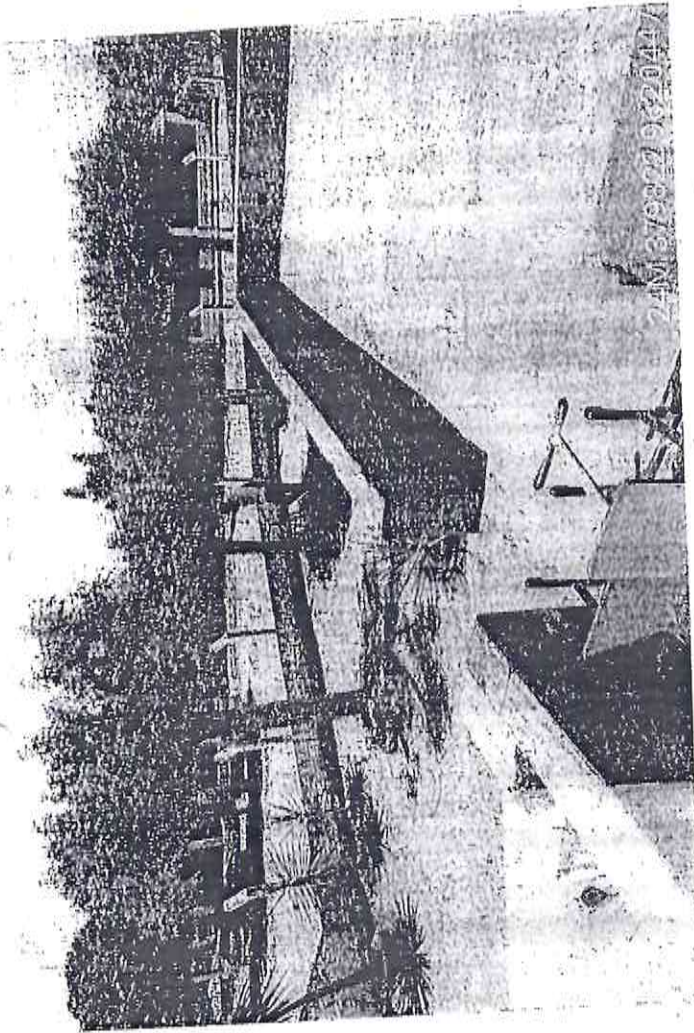


24M 379835 96204229

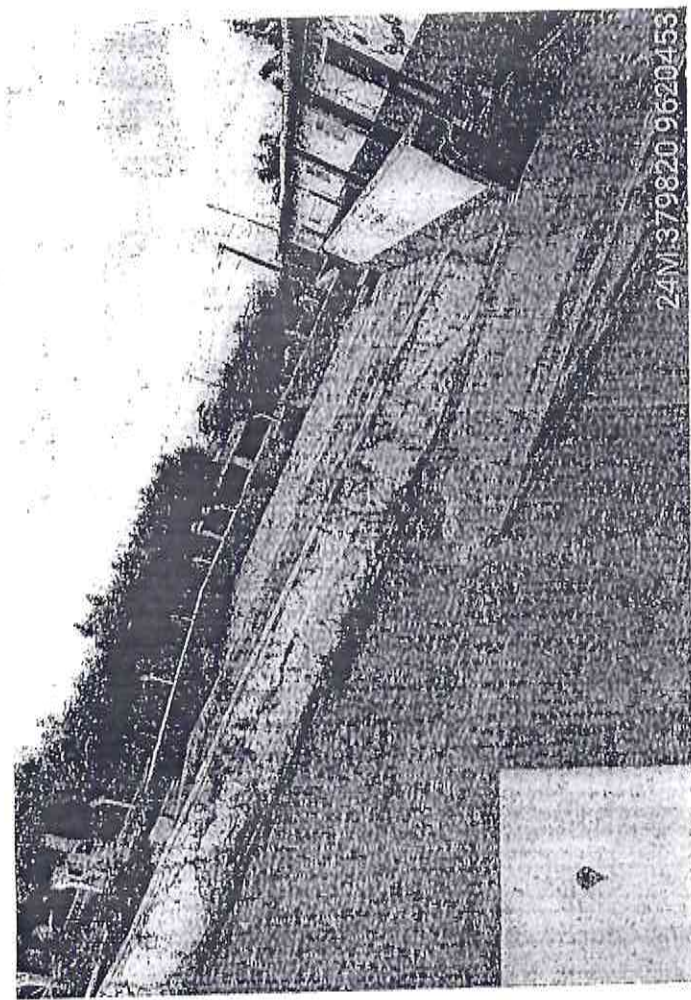
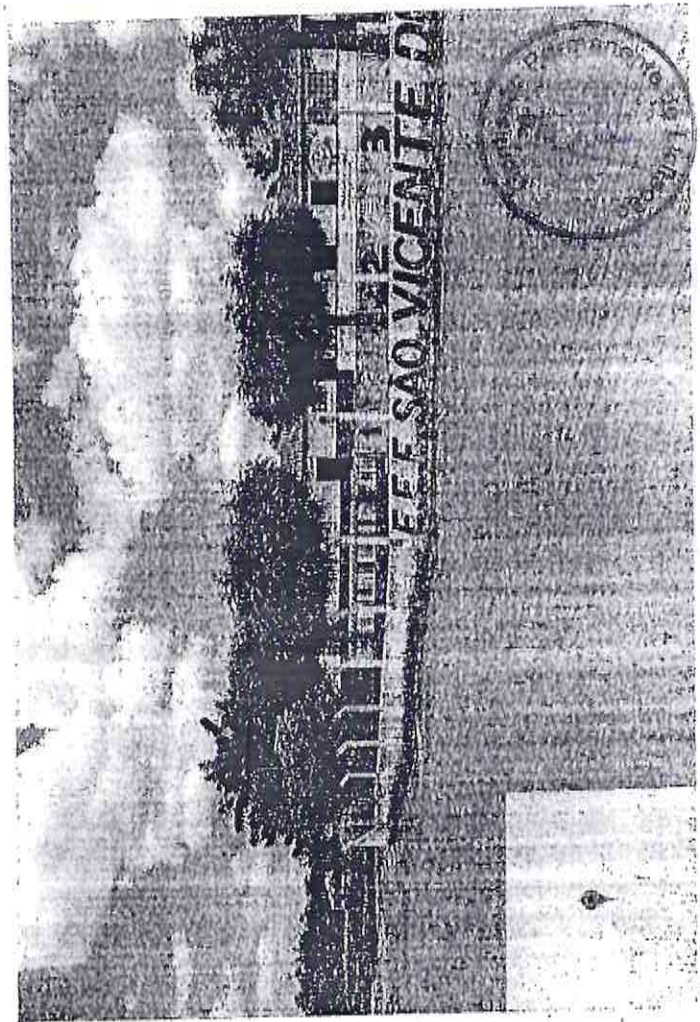
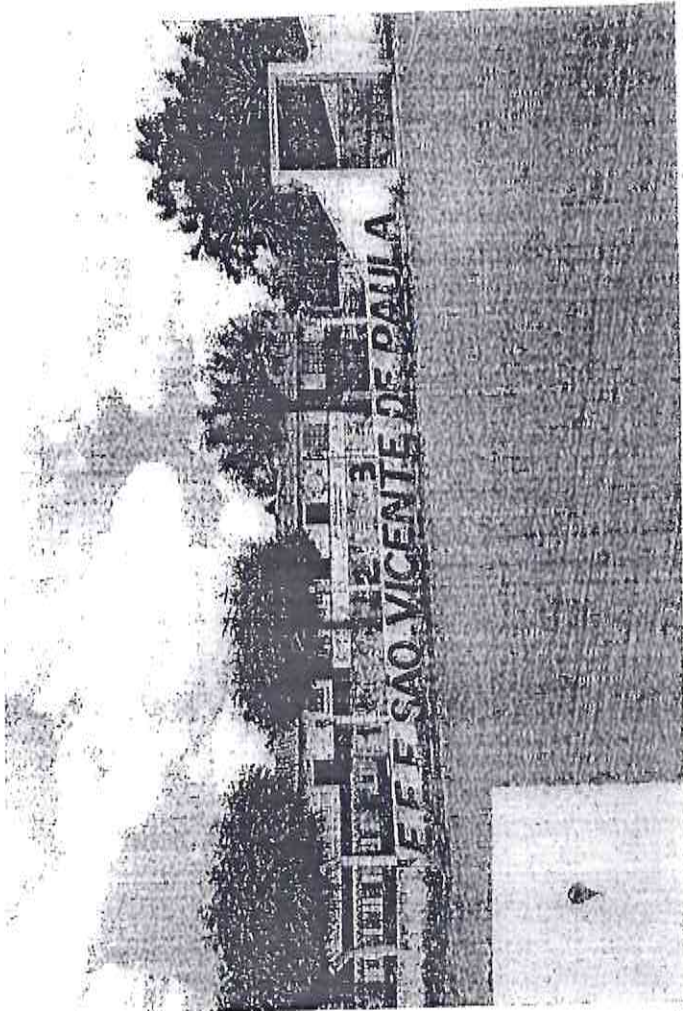
CE: 62



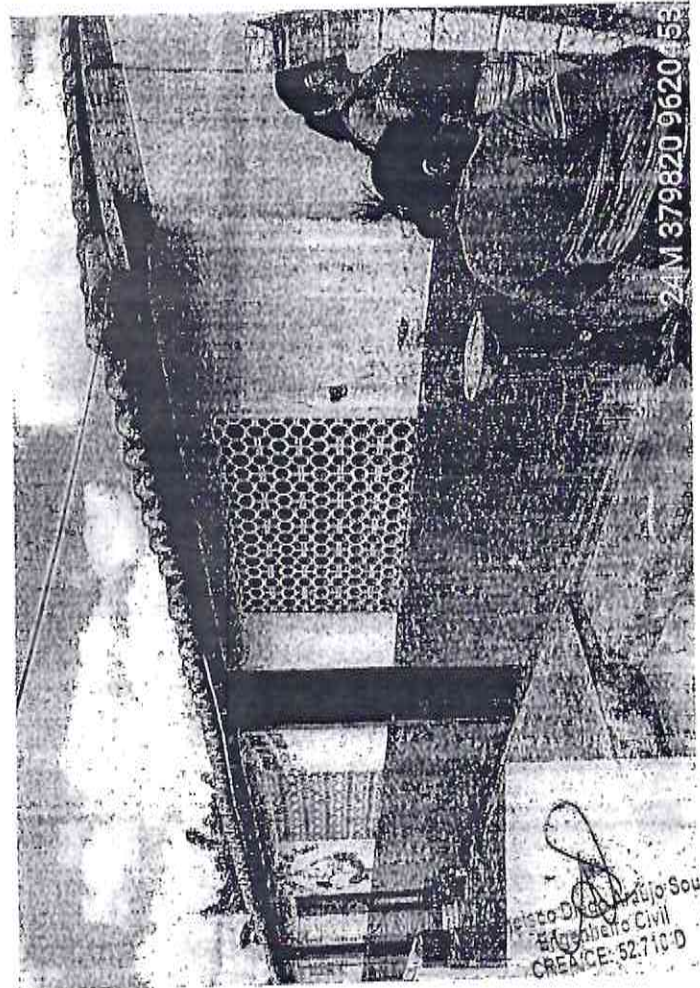
24M 379835 96204229



Aratijo Sr.
Engenheiro Civil
CREA/CE: 52.176-0

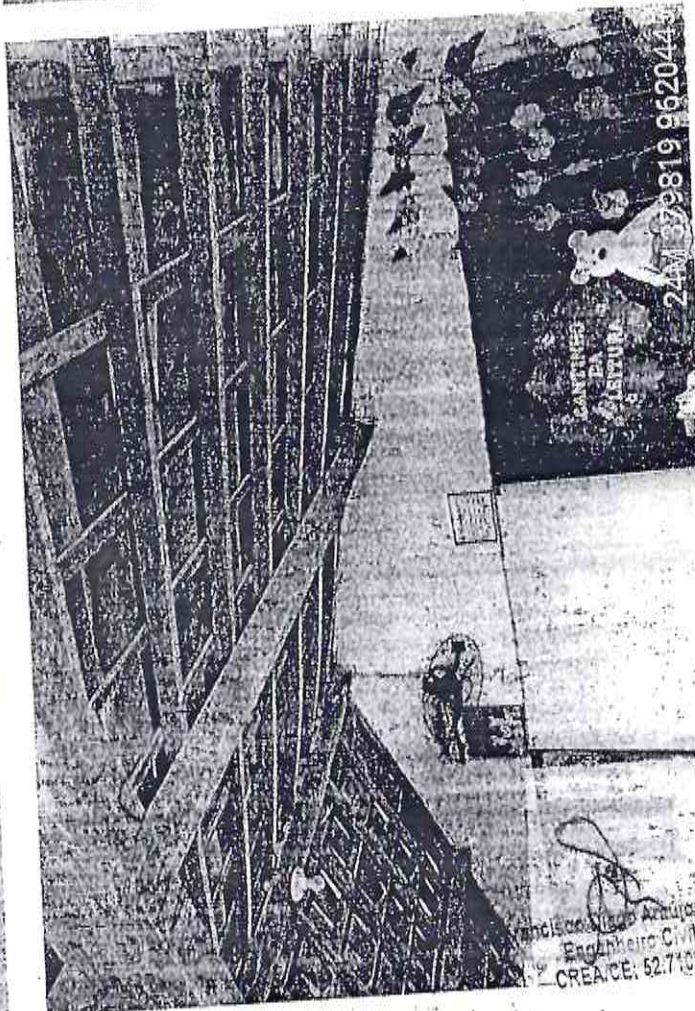
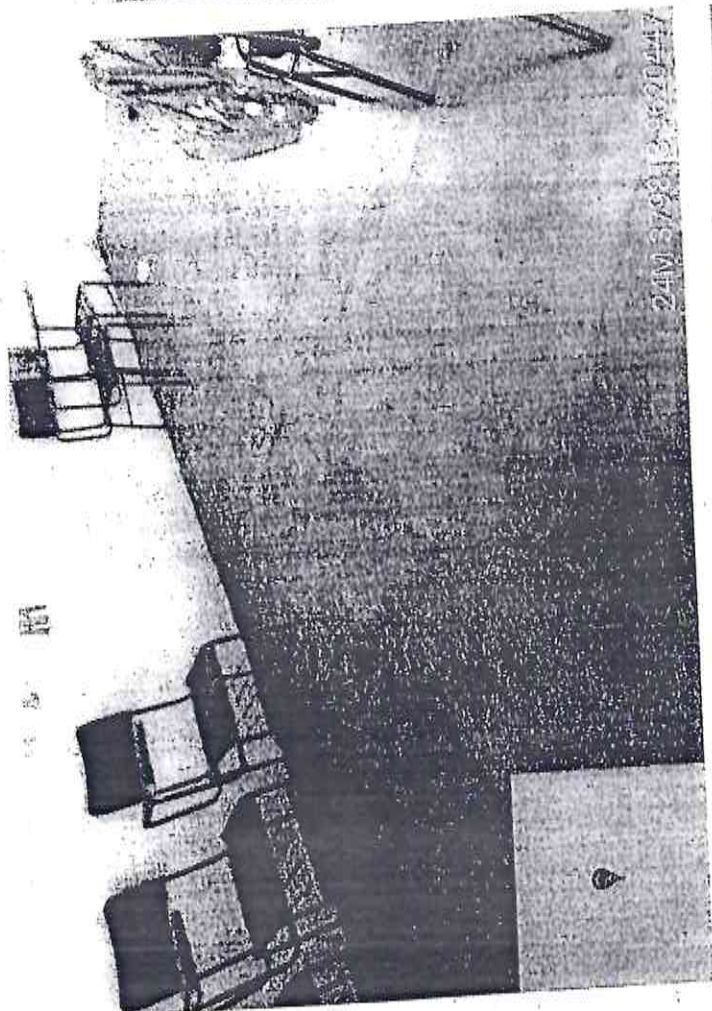
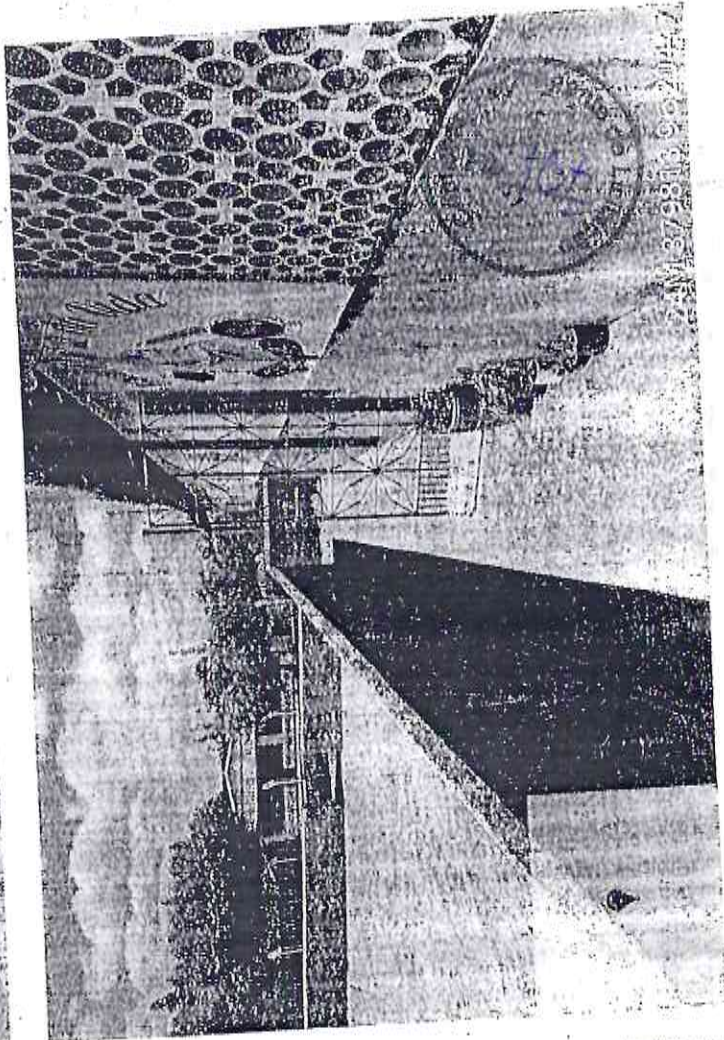
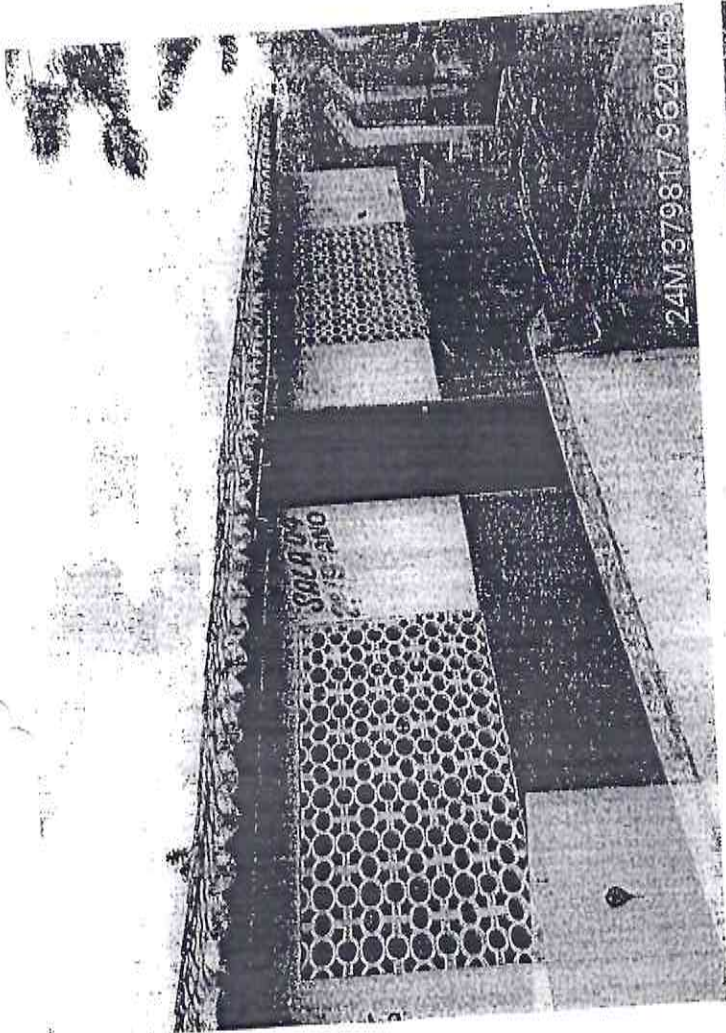


24M 379820 9620453

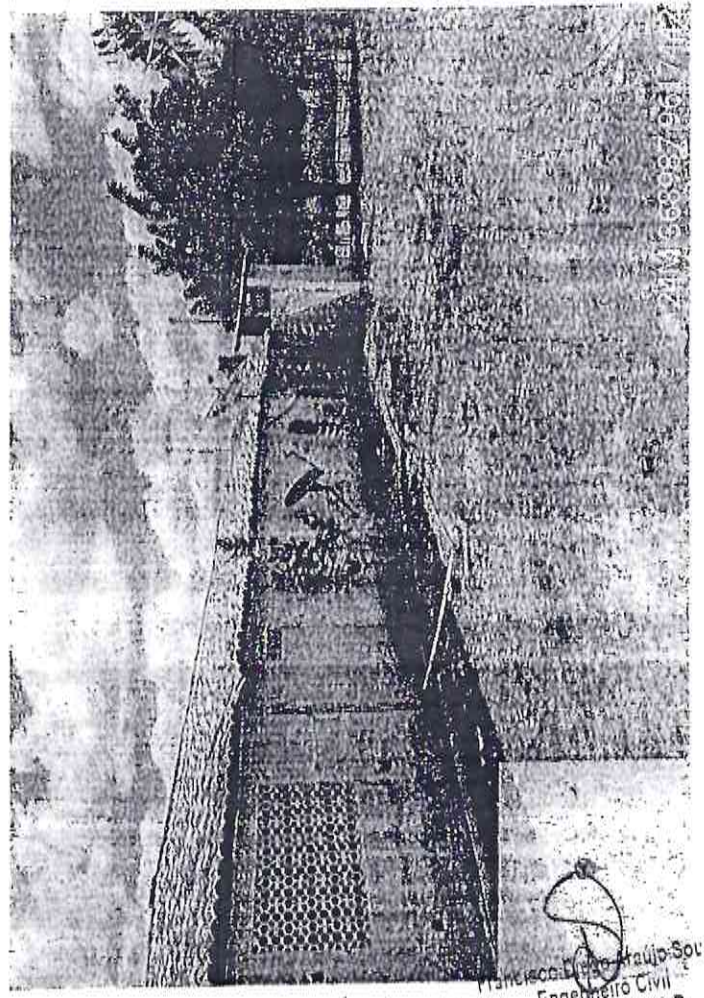
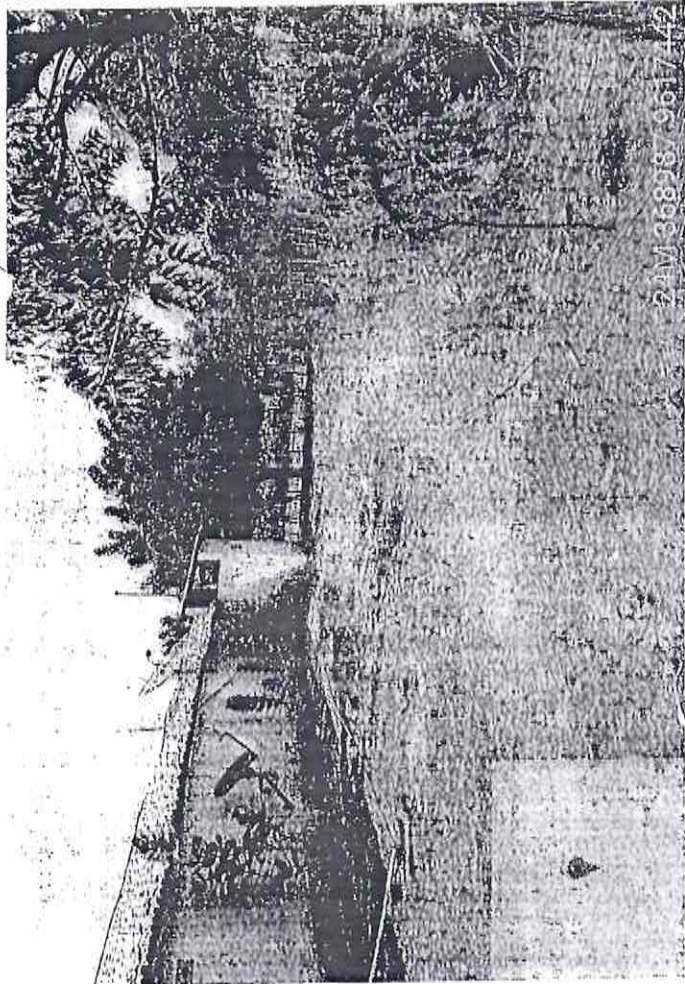
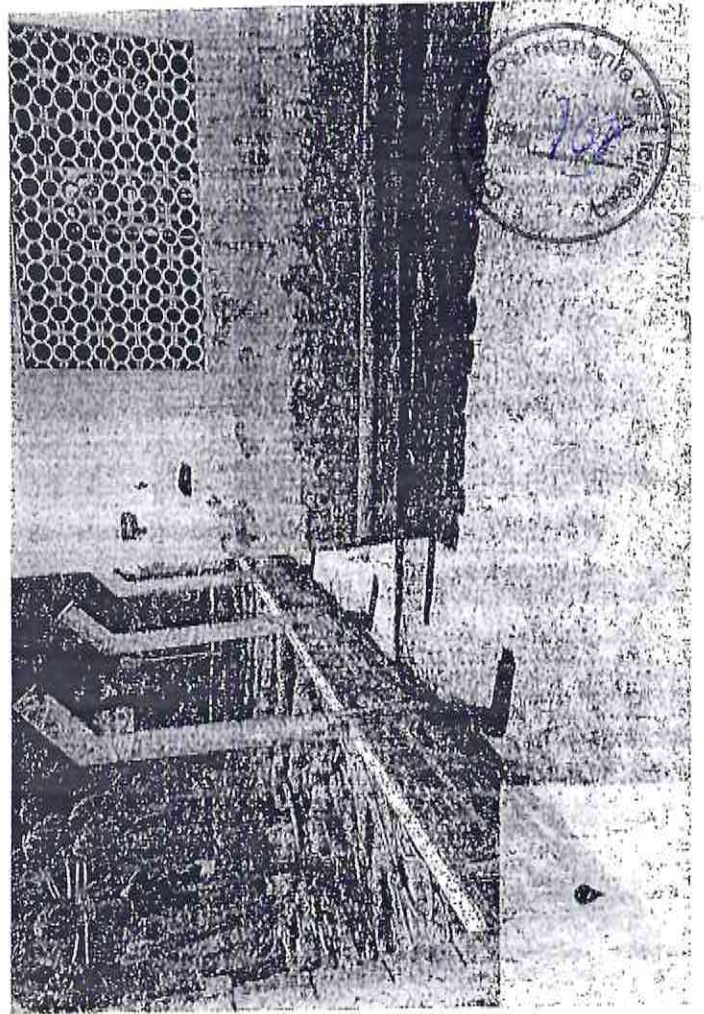
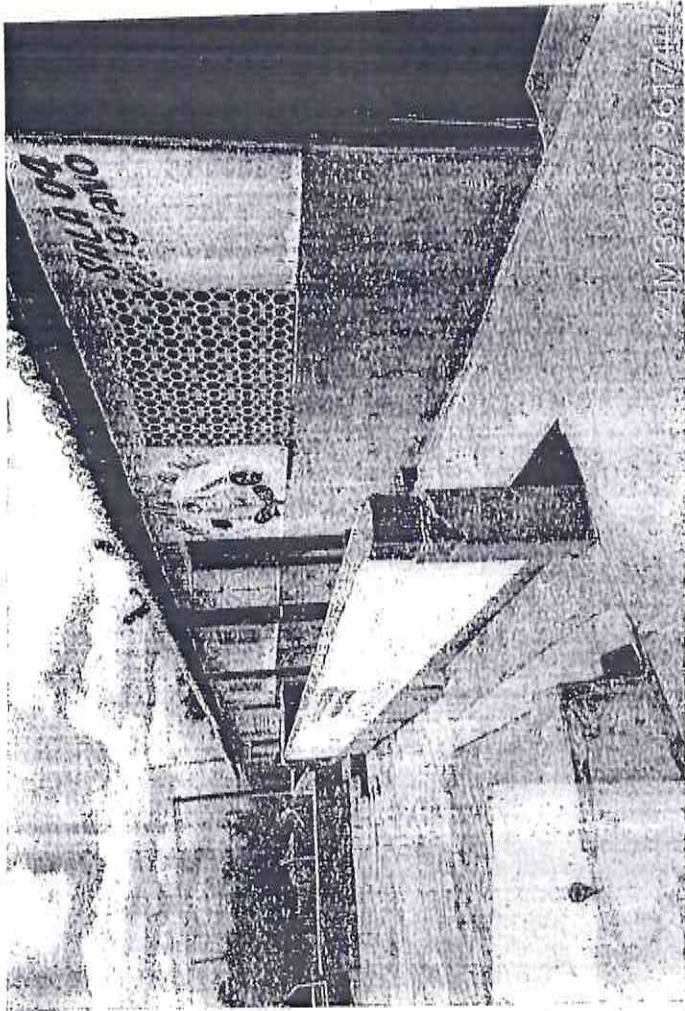


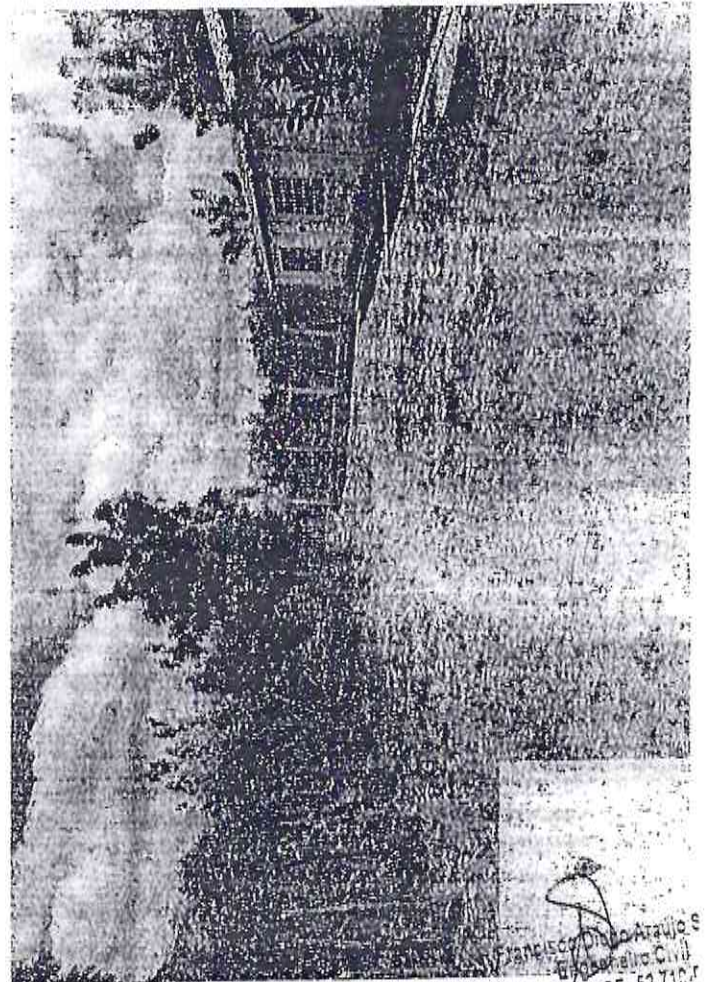
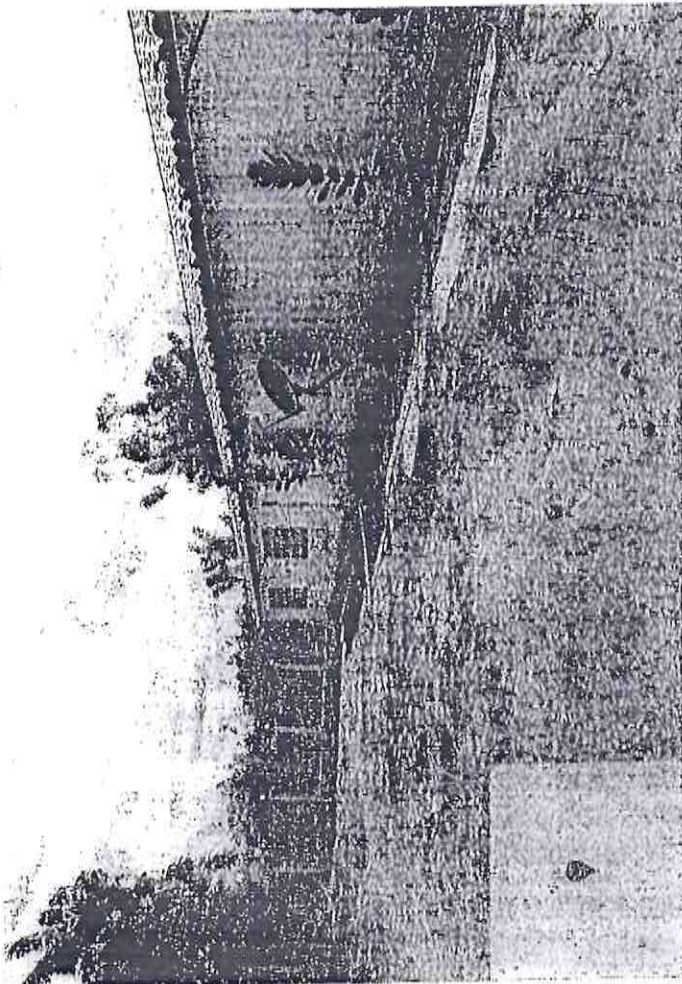
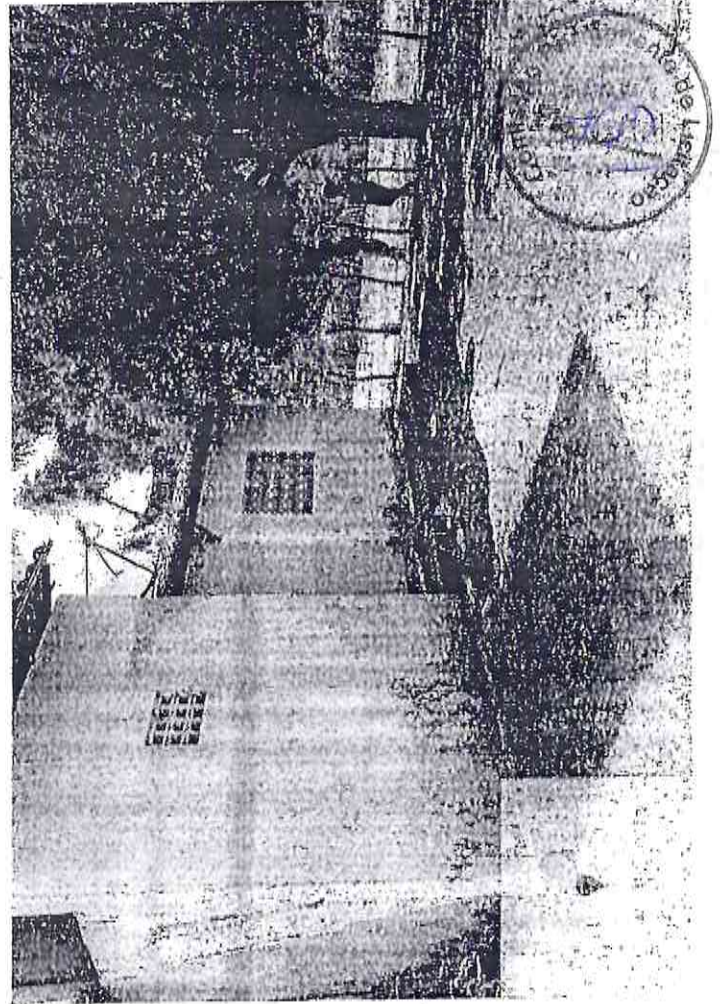
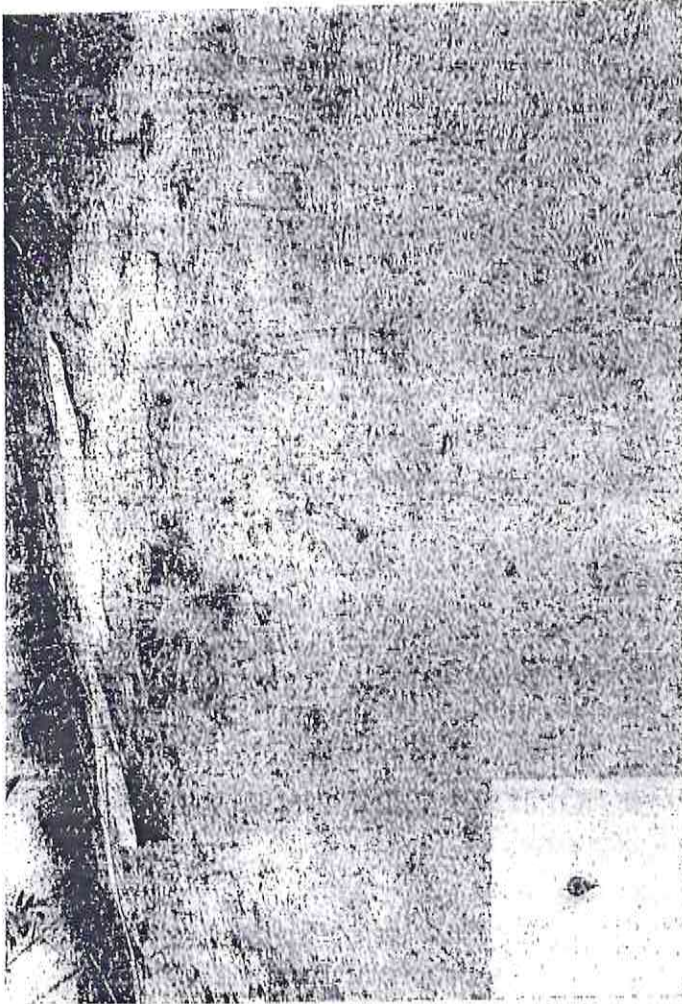
24M 379820 9620453

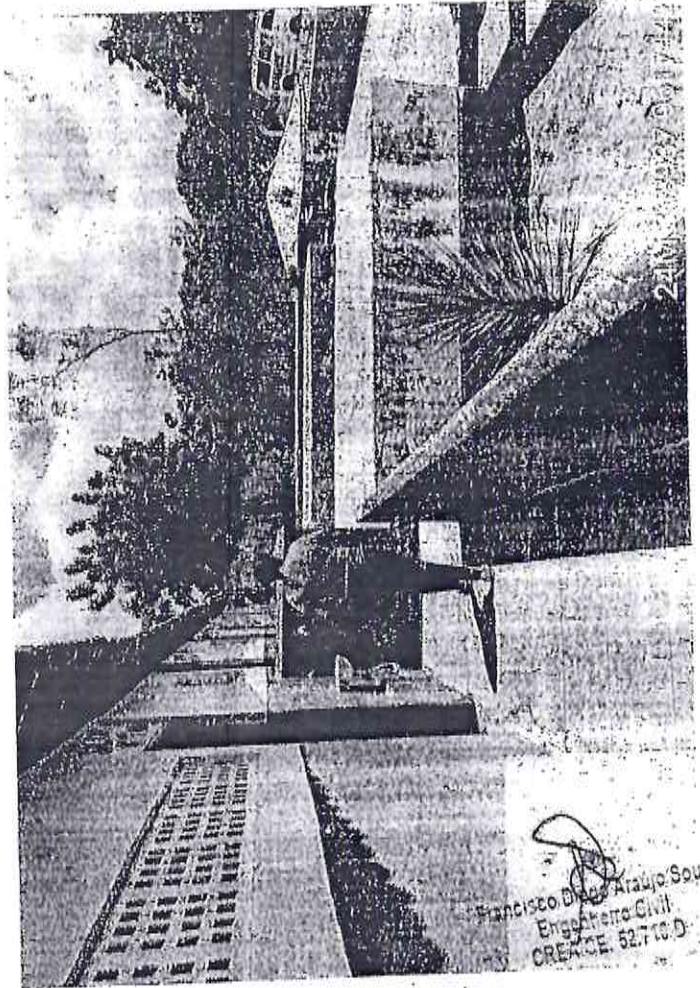
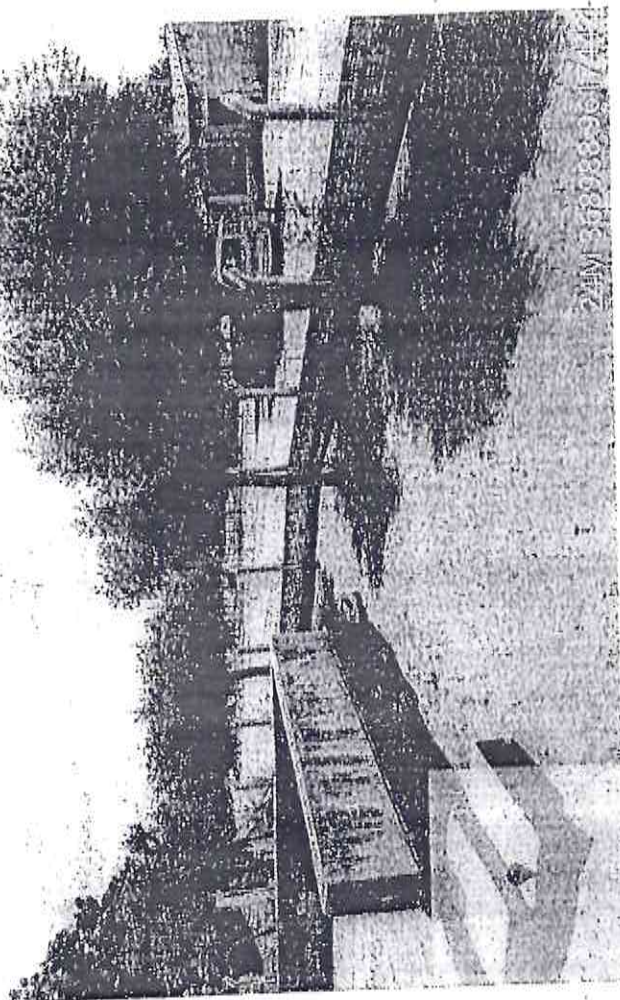
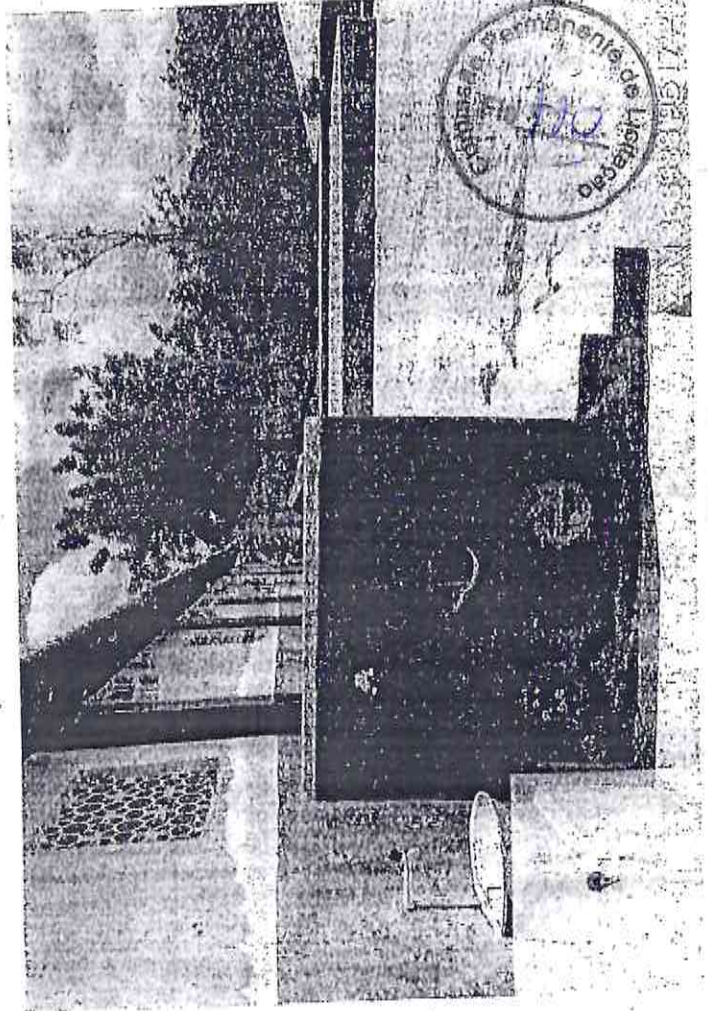
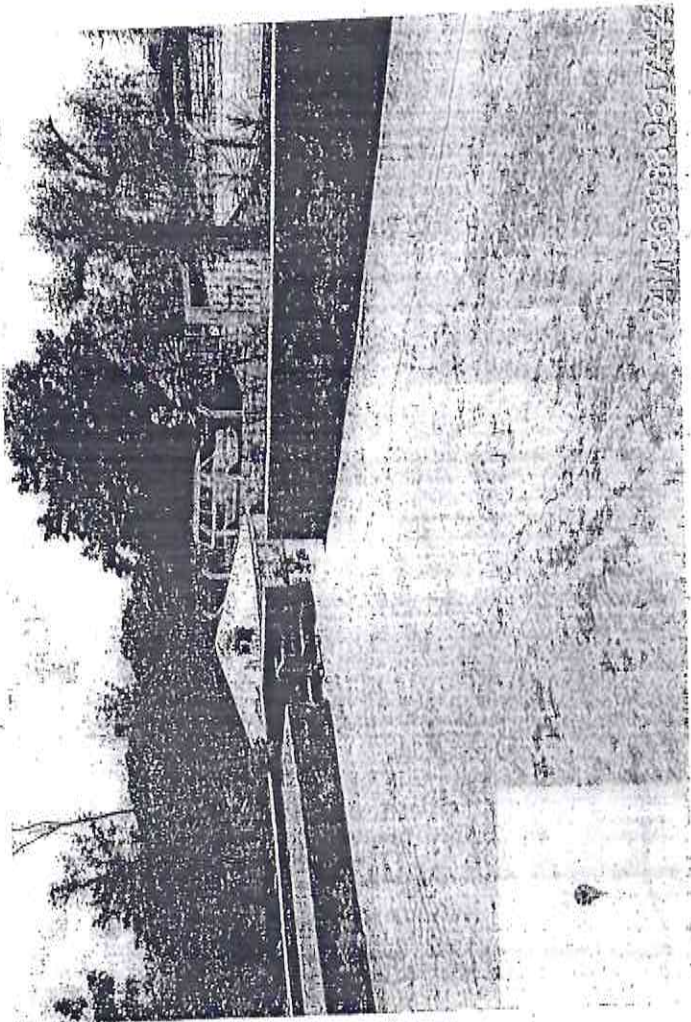
E.F.F. SAO VICENTE DE PAULA
E.F.F. SAO VICENTE DE PAULA
CREA/CE: 52.710 D

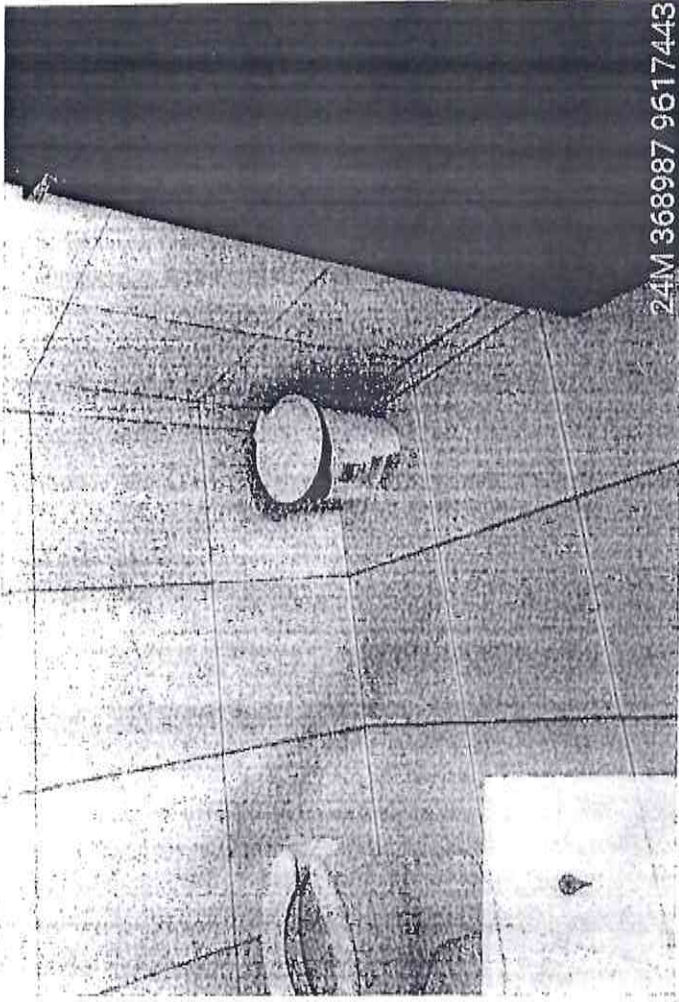


Francisco Alben Arriaga
Engenheiro Civil
CREA/CE: 52.710

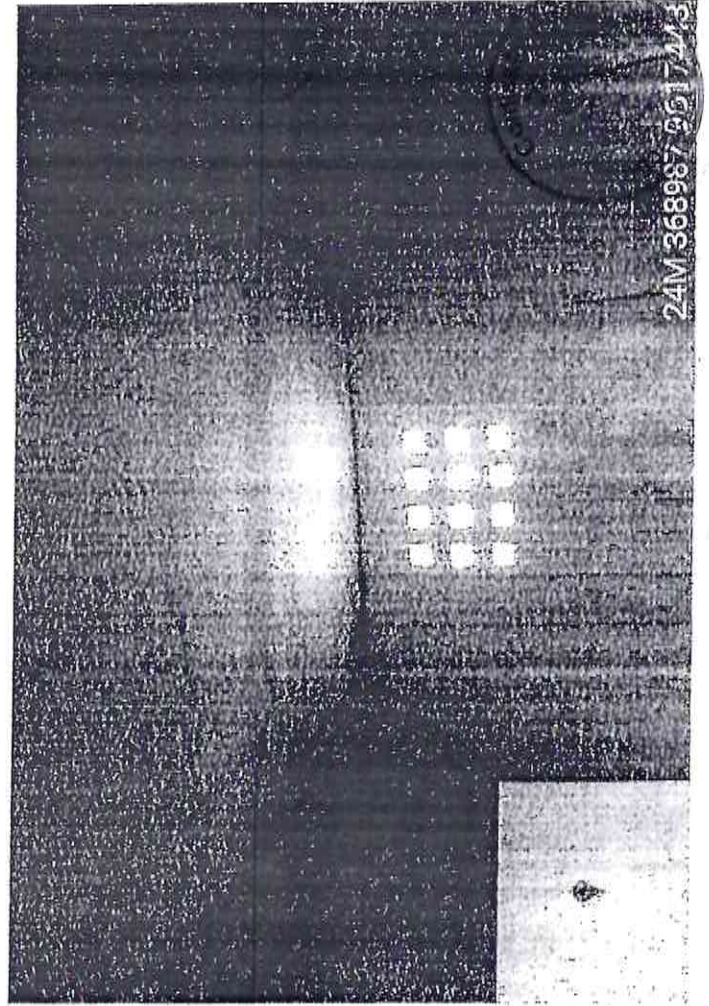




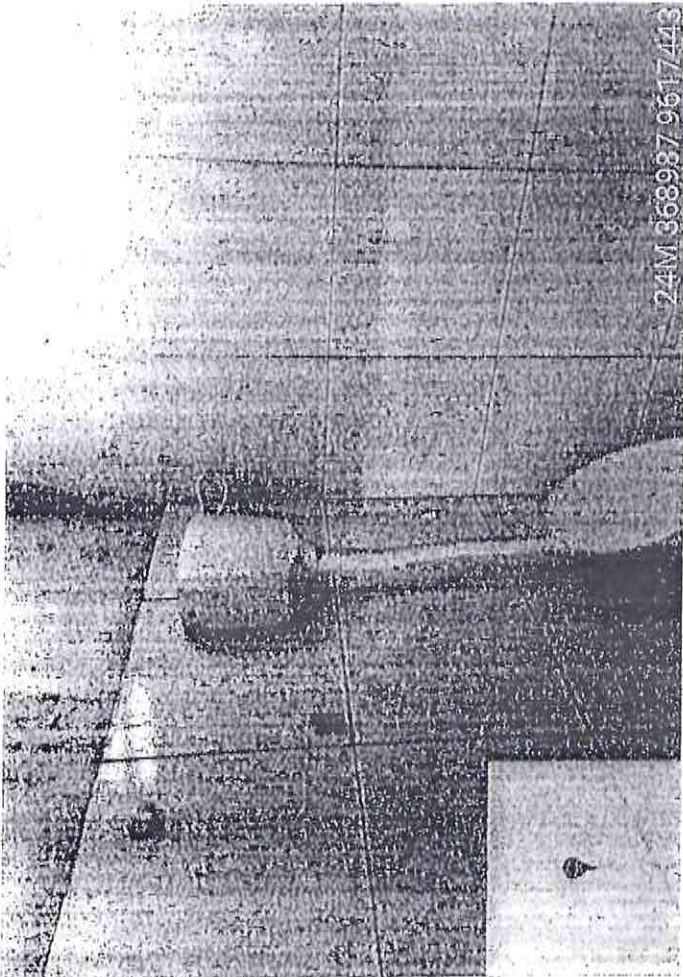




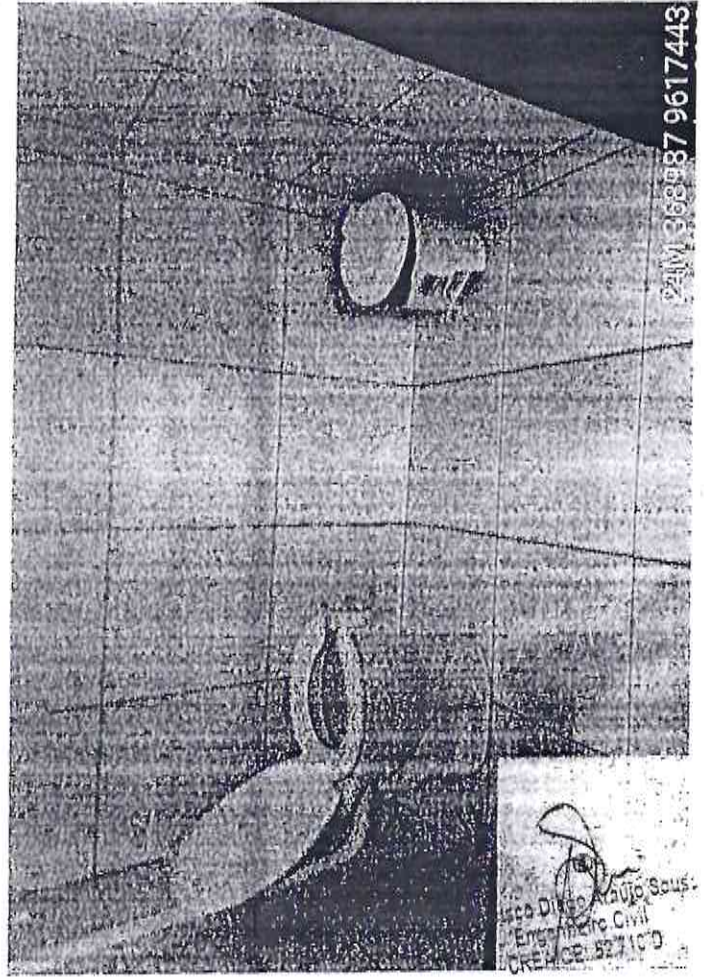
24M 368987 9617443



24M 368987 9617443

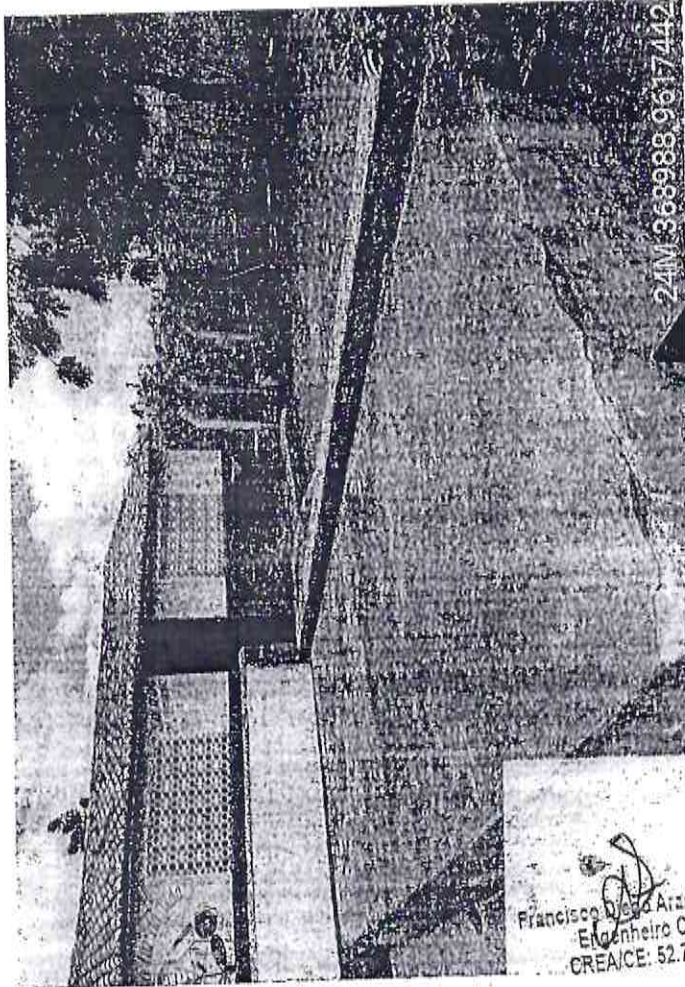
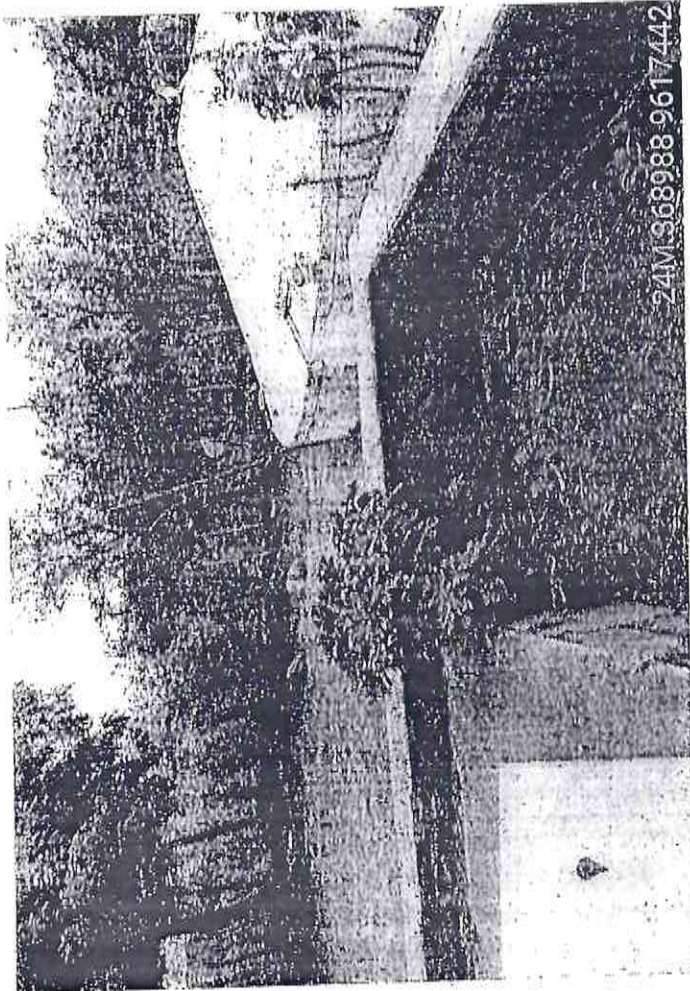
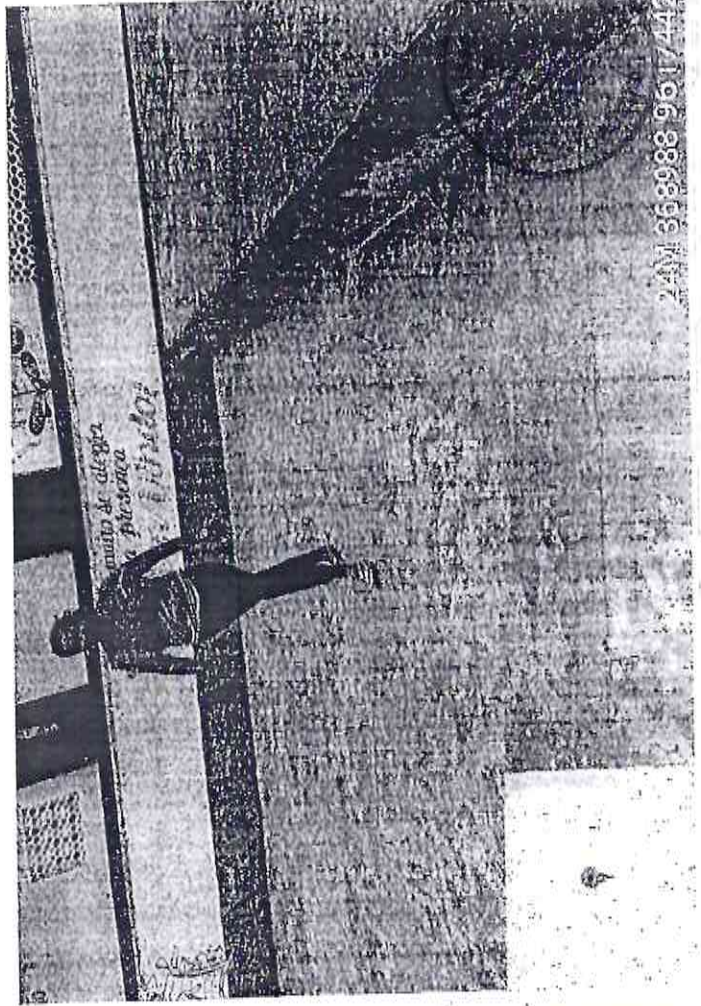
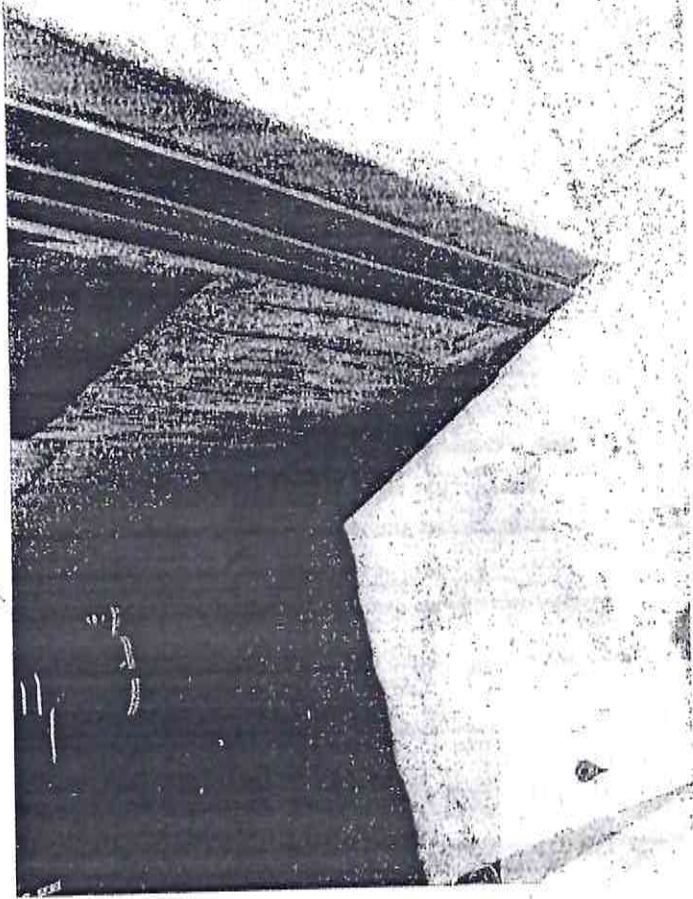


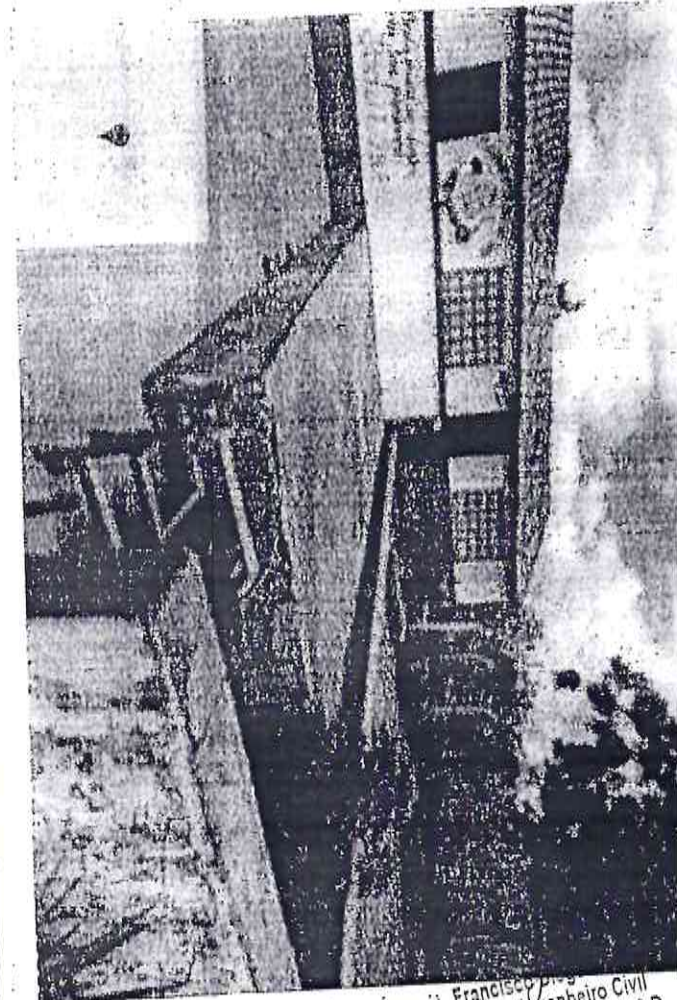
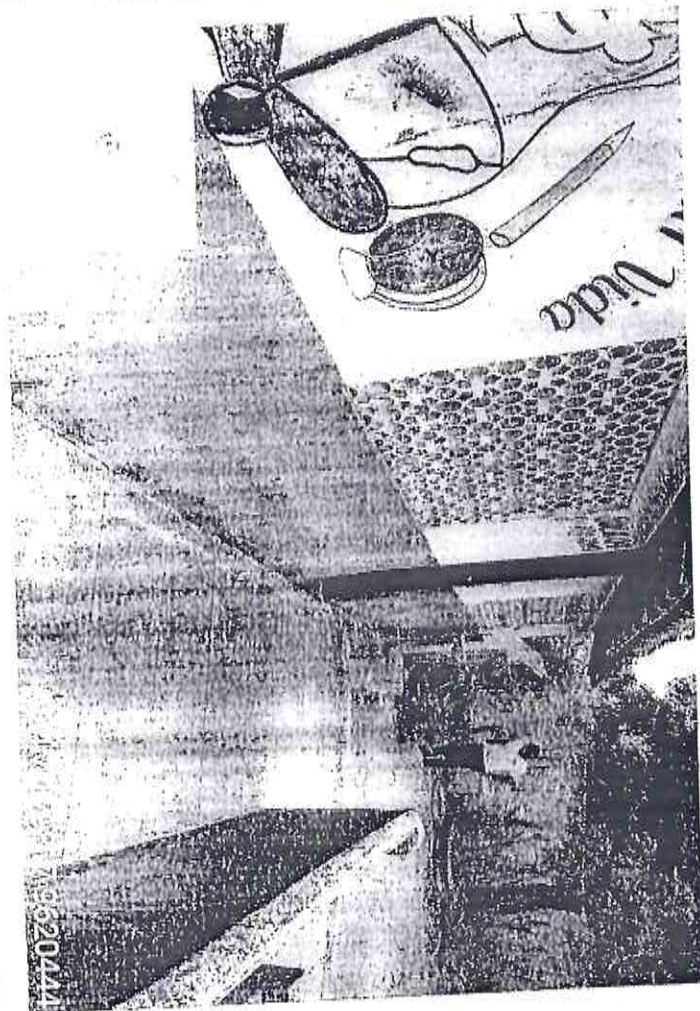
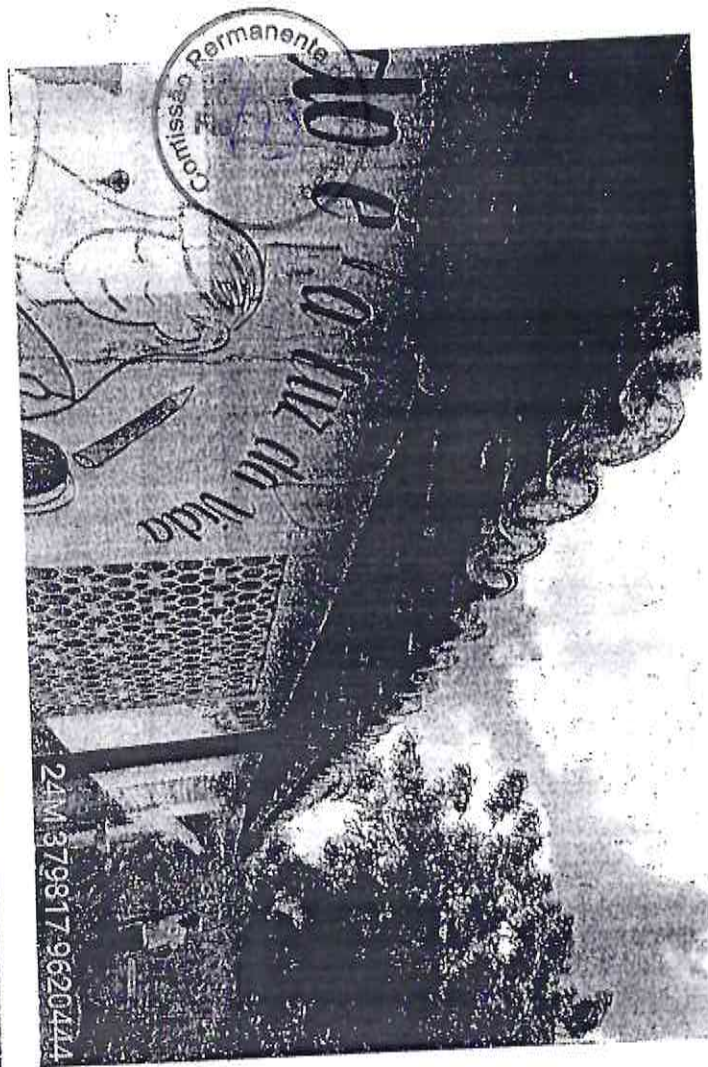
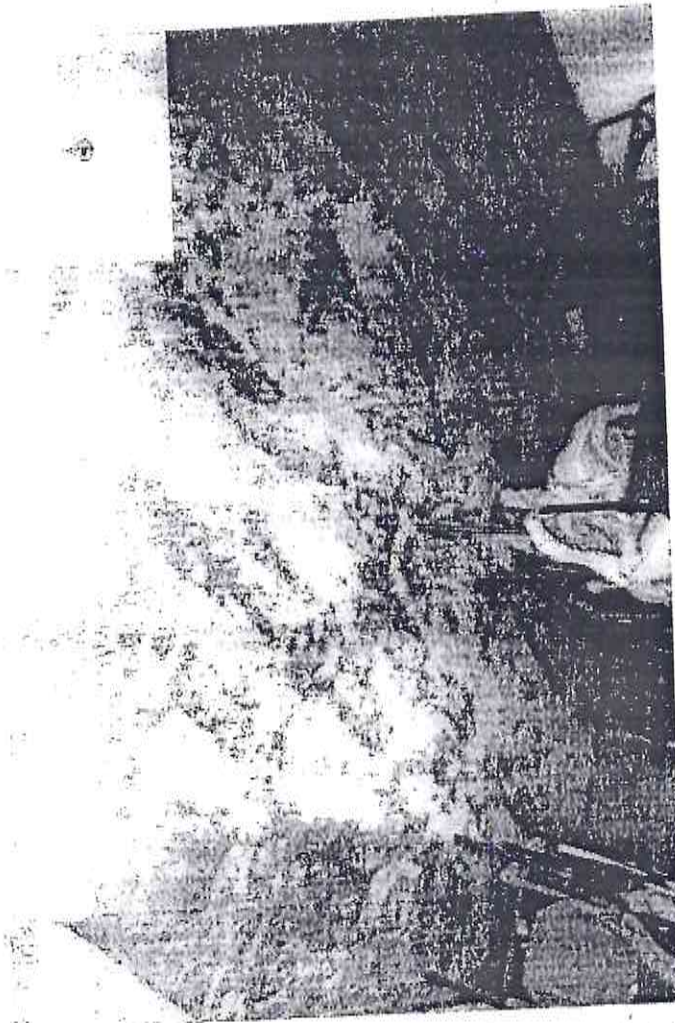
24M 368987 9617443



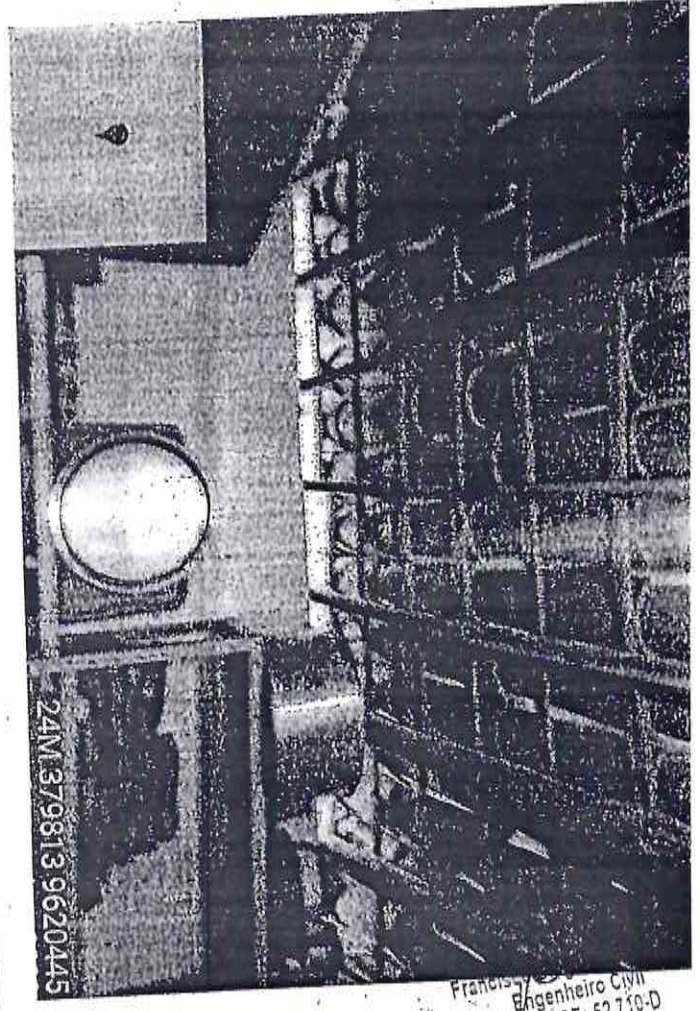
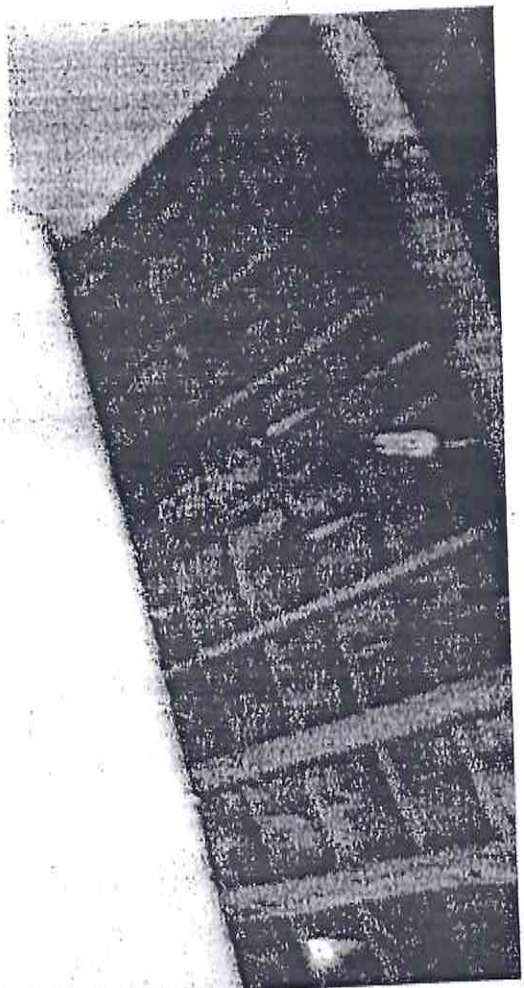
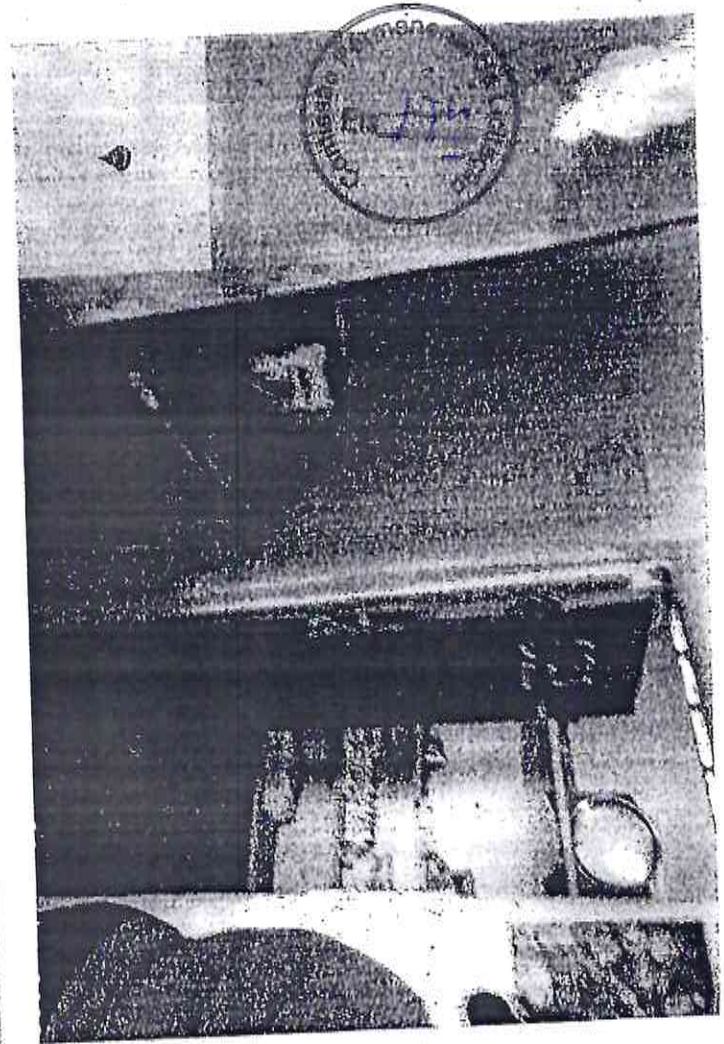
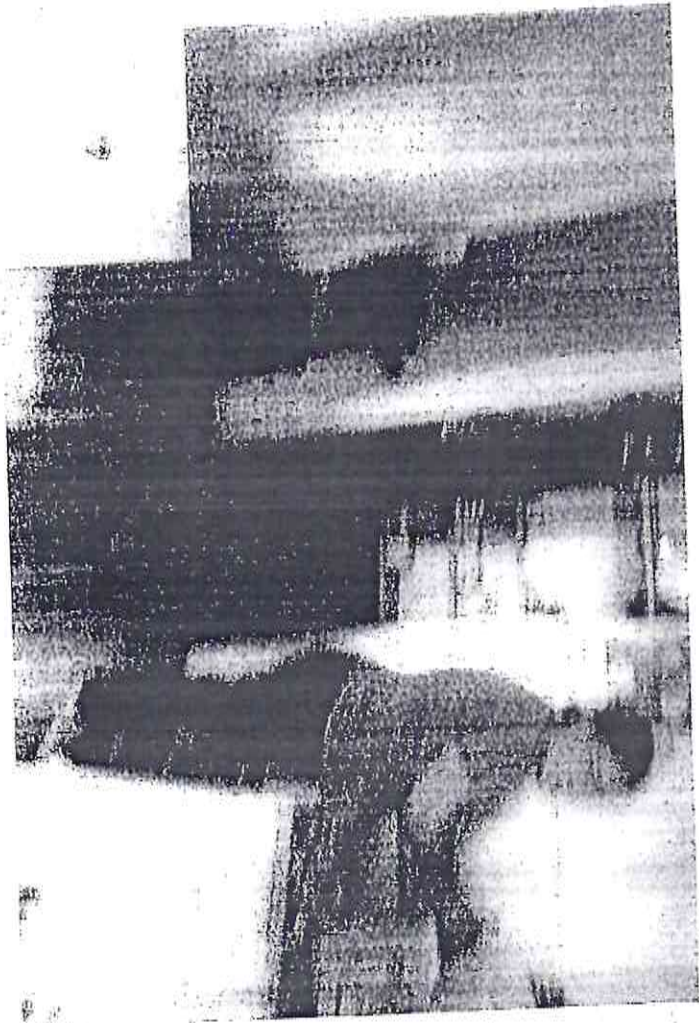
24M 368987 9617443

Ing. Diego Valjo Saus.
Ingeniero Civil
CREM. 827100





Francisco
Engenheiro Civil
CREA/CE: 52.710-D



DIWASTIO

24M 379813 9620445

Francisco
Engenheiro Civil
CREA/CE: 52.710-D